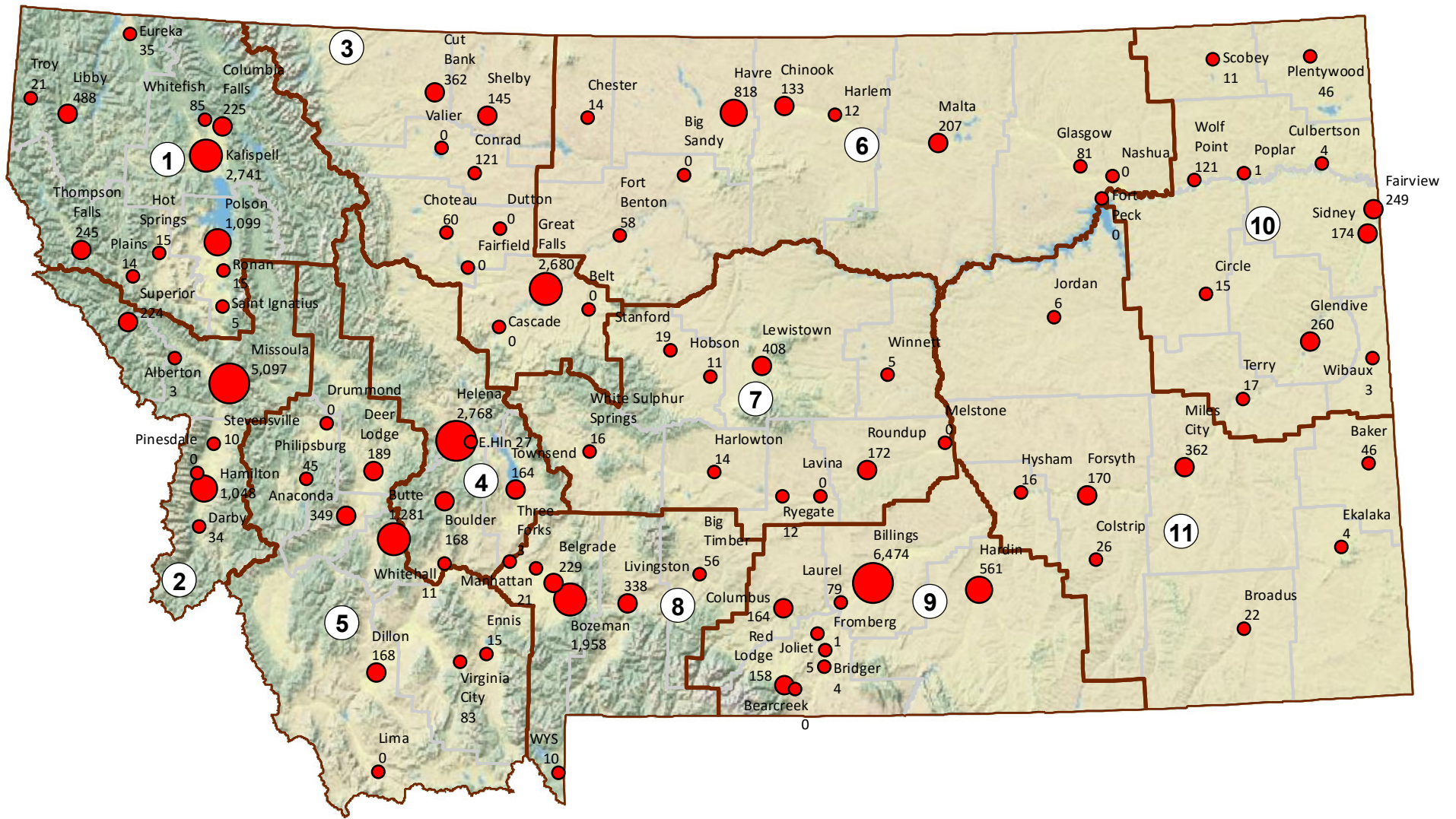


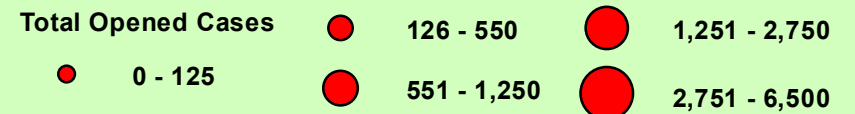
Office of the State Public Defender

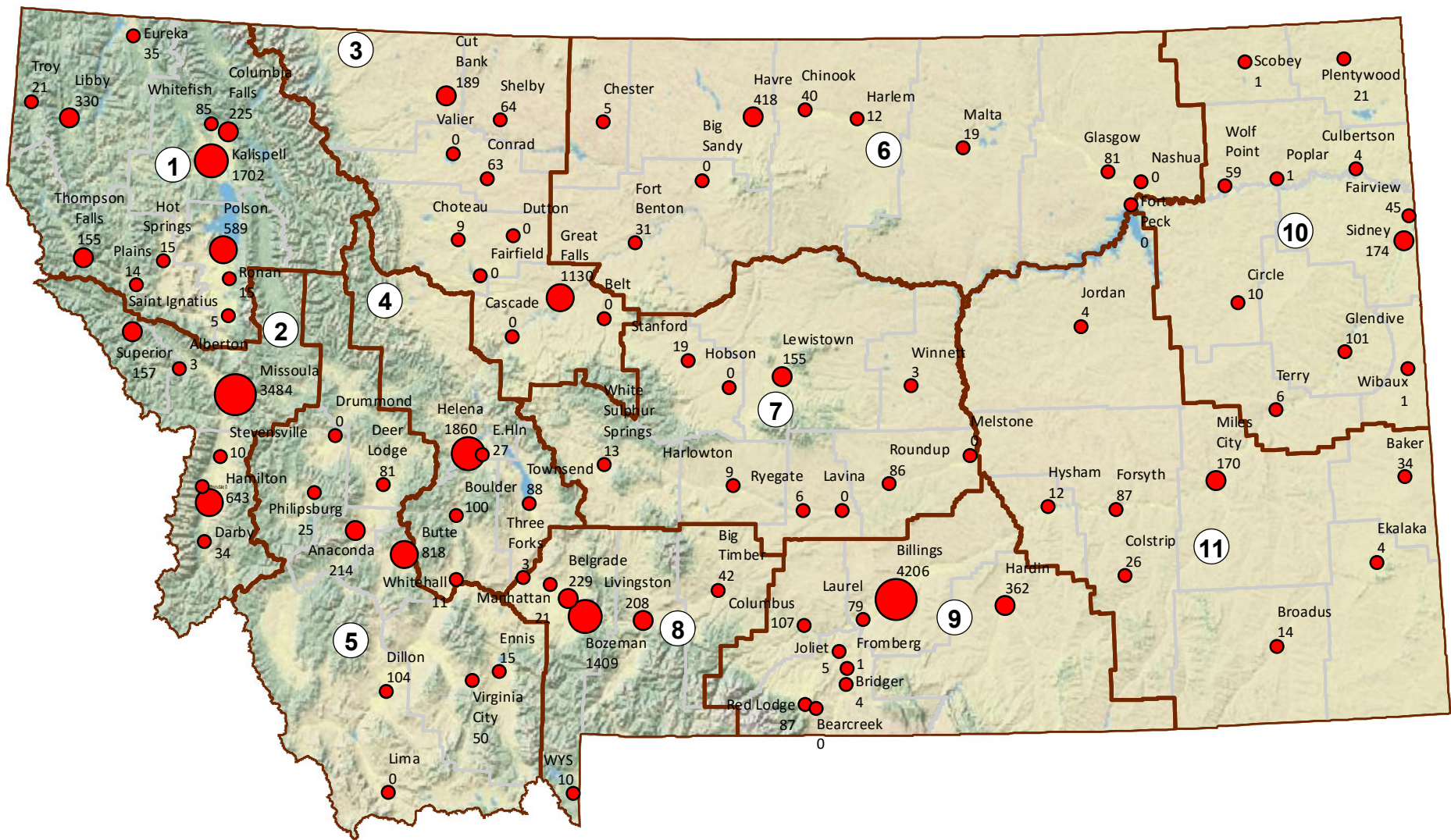
FY 15 Agency Statistics





Total New Cases Opened - Fiscal Year 2015

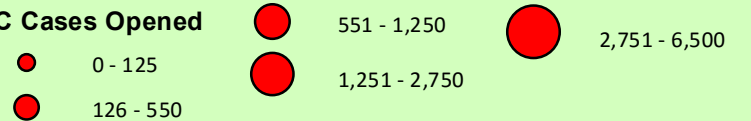


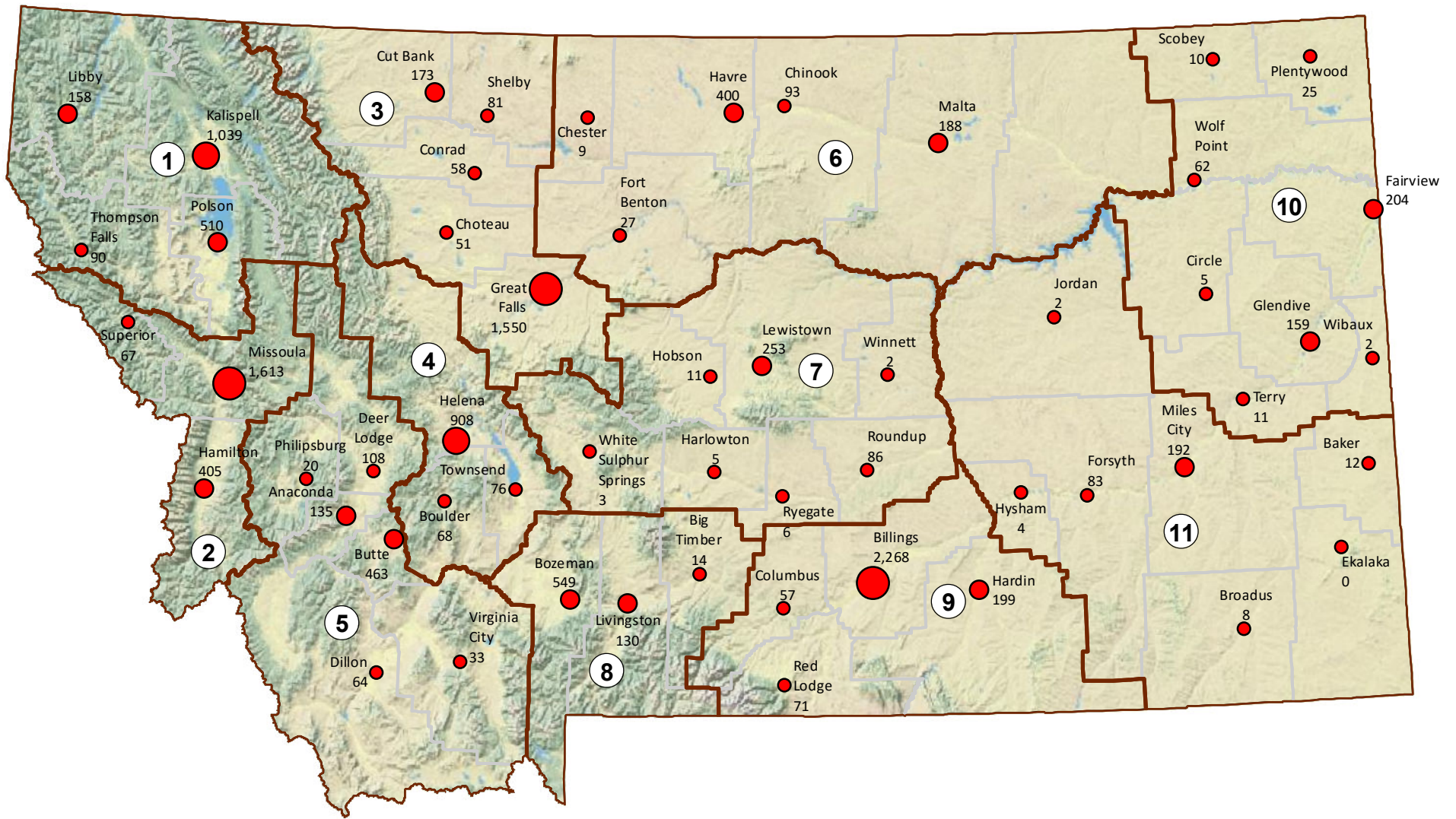


New Cases Opened in Courts of Limited Jurisdiction - Fiscal Year 2015

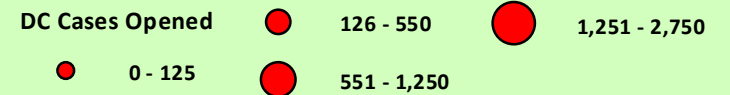


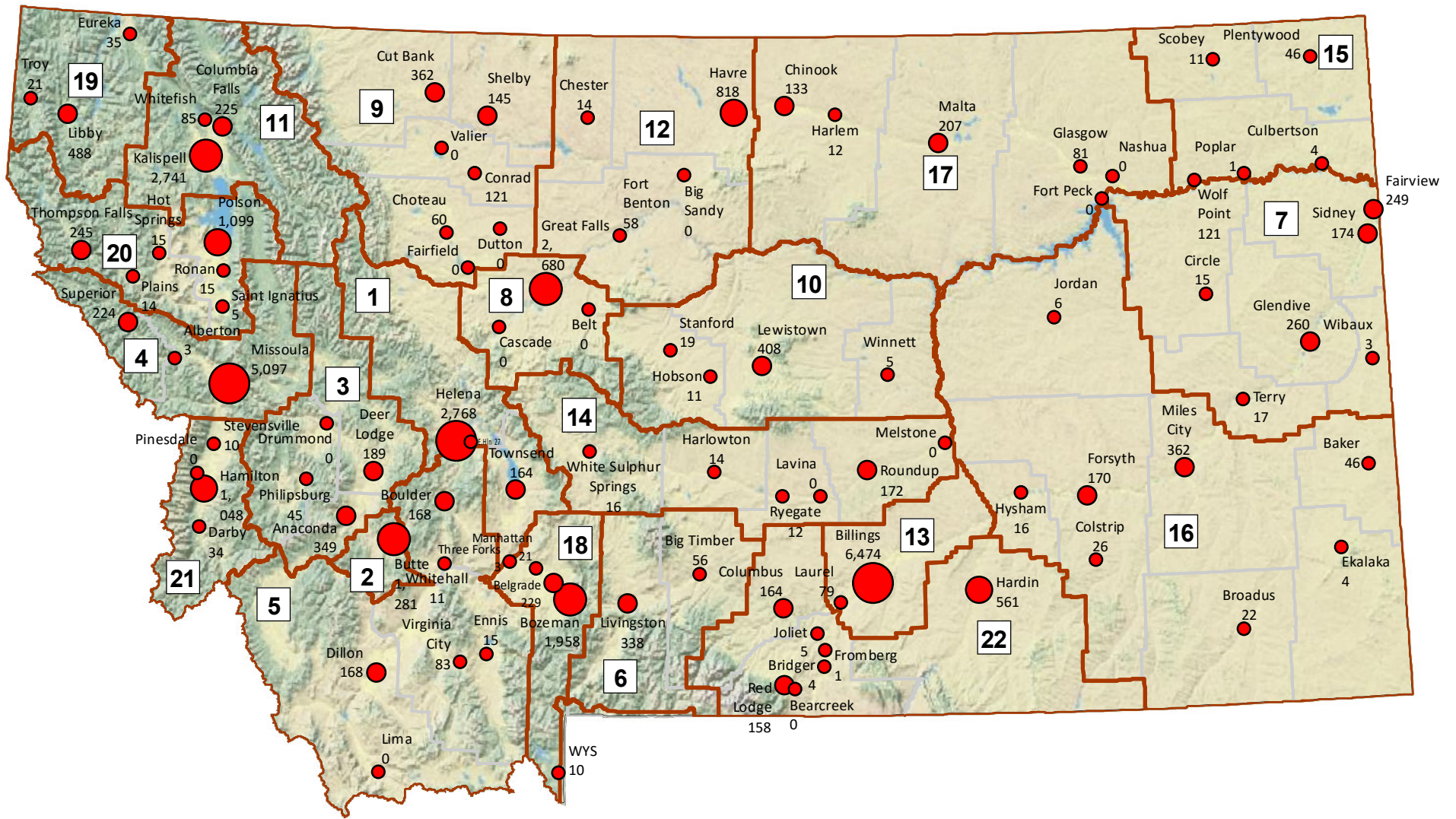
LC Cases Opened



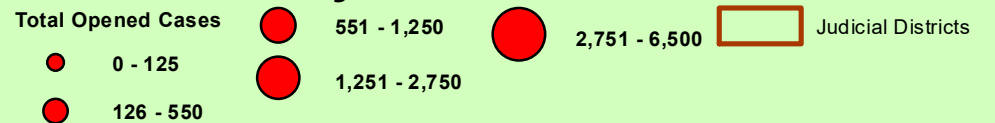


New Cases Opened in District Courts - Fiscal Year 2015





Total New Cases Opened - Fiscal Year 2015 by Judicial Districts



REGION 1 KALISPELL

Attorneys: 18.5
 Support Staff: 8
 Investigators: 3
 Contract Attorneys: 37
 FYE 2015 Cases Opened: 4,988
 District Court Cases: 1,797
 Cases in Courts of Limited Jurisdiction: 3,191
 District Courts: 4
 Courts of Limited Jurisdiction: 16
 Sq. Miles: 13,365
 Region Population (2010 Census): 150,774
 Region Poverty Pop. (2010 Census): 25,219

Region 1

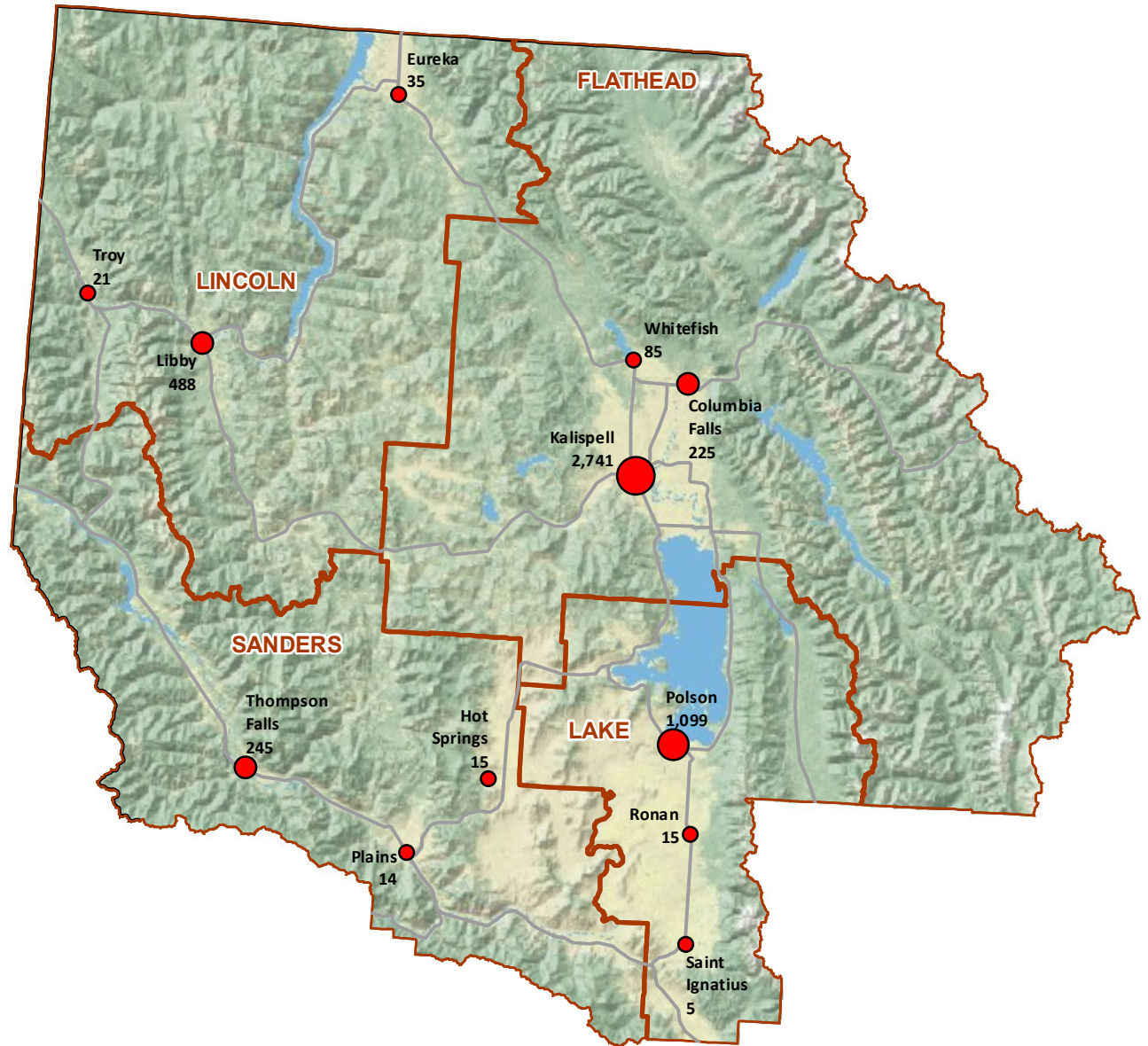
Total Opened Cases

- 0 - 125
- 126 - 550
- 551 - 1,250
- 1,251 - 2,750



Office of the State
Public Defender

OPD Total New Cases Opened in Fiscal Year 2015



10 5 0 10 20 30 40 Miles

REGION 2 MISSOULA

Attorneys: 23.5
 Support Staff: 10
 Investigators: 3
 Contract Attorneys: 62
 FYE 2015 Cases Opened: 6,416
 District Court Cases: 2,085
 Cases in Courts of Limited Jurisdiction: 4,331
 District Courts: 3
 Courts of Limited Jurisdiction: 10
 Sq. Miles: 6,235
 Region Population (2010 Census): 153,734
 Region Poverty Pop. (2010 Census): 23,620

Region 2

Total Opened Cases

- 0 - 125
- 126 - 550
- 551 - 1,250
- 2,751 - 6,500



OPD Total New Cases Opened in Fiscal Year 2015



REGION 3 GREAT FALLS

Attorneys: 12
 Support Staff: 7
 Investigators: 2
 Contract Attorneys: 42
 FYE 2015 Cases Opened: 3,368
 District Court Cases: 1,913
 Cases in Courts of Limited Jurisdiction: 1,455
 District Courts: 5
 Courts of Limited Jurisdiction: 16
 Sq. Miles: 11,618
 Region Population (2010 Census): 112,276
 Region Poverty Pop. (2010 Census): 17,237

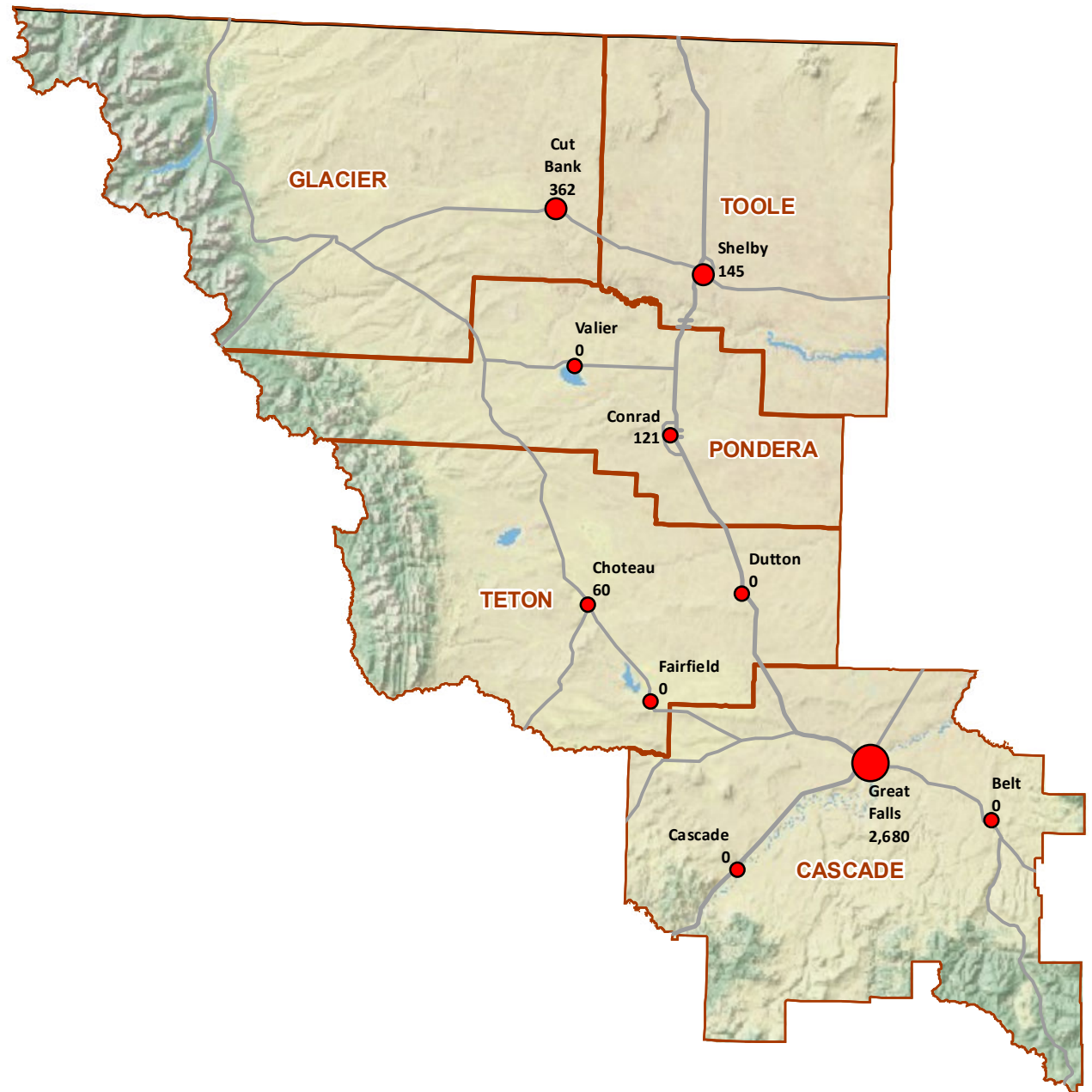
Region 3

Total Opened Cases

- 0 - 125
- 126 - 550
- 1,251 - 2,750



OPD Total New Cases Opened in Fiscal Year 2015



REGION 4 HELENA

Attorneys: 13
 Support Staff: 6
 Investigators: 1
 Contract Attorneys: 37
 FYE 2015 Cases Opened: 3,138
 District Court Cases: 1,052
 Cases in Courts of Limited Jurisdiction: 2,086
 District Courts: 3
 Courts of Limited Jurisdiction: 8
 Sq. Miles: 6,388
 Region Population (2010 Census): 80,413
 Region Poverty Pop. (2010 Census): 8,813

Region 4

Total Opened Cases

- 0 - 125
- 126 - 550
- 2,751 - 6,500



OPD Total New Cases Opened in Fiscal Year 2015



REGION 5 BUTTE

Attorneys: 9
 Support Staff: 4
 Investigators: 1.5
 Contract Attorneys: 48
 FYE 2015 Cases Opened: 2,130
 District Court Cases: 823
 Cases in Courts of Limited Jurisdiction: 1,307
 District Courts: 6
 Courts of Limited Jurisdiction: 14
 Sq. Miles: 14,693
 Region Population (2010 Census): 70,541
 Region Poverty Pop. (2010 Census): 11,524

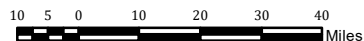
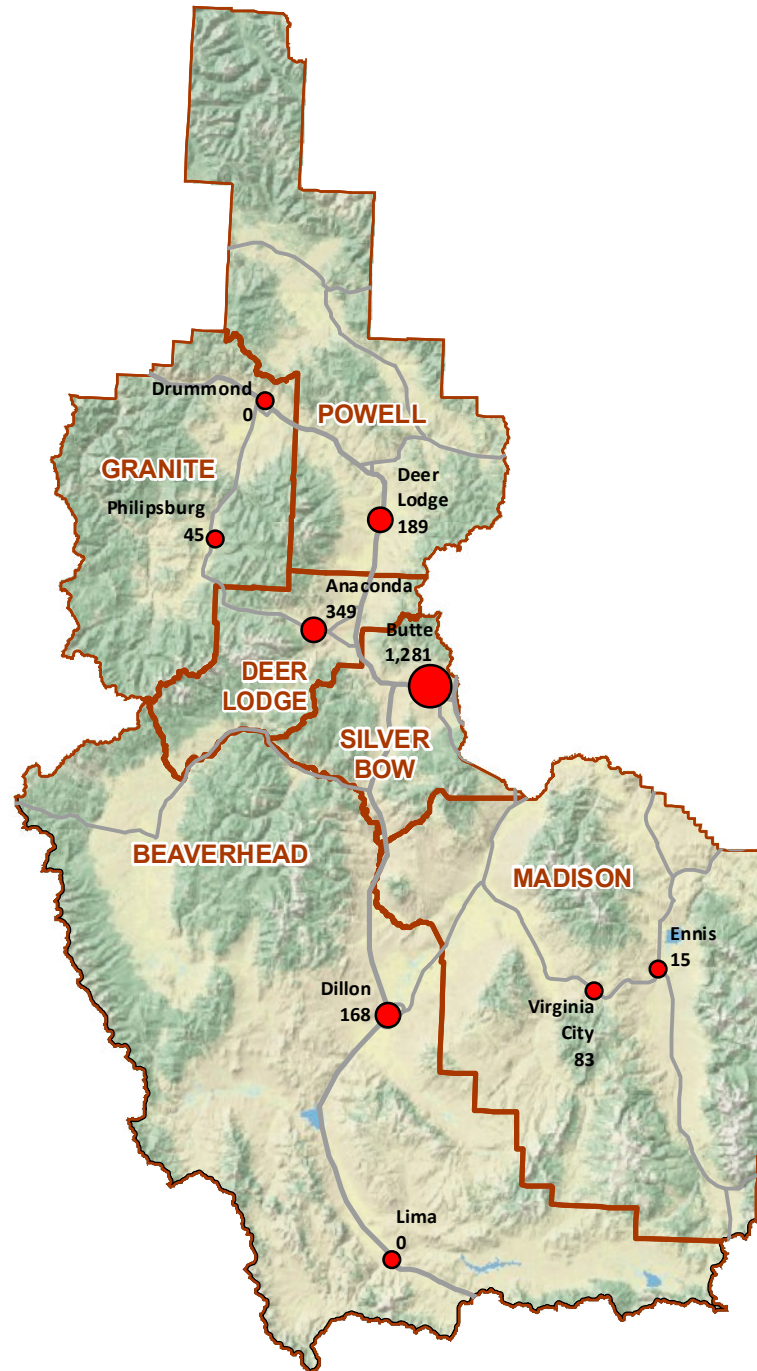
Region 5

Total Opened Cases

- 0 - 125
- 126 - 550
- 1,251 - 2,750



OPD Total New Cases Opened in Fiscal Year 2015



REGION 6 HAVRE

Attorneys: 4
 Support Staff: 2
 Investigators: 1
 Contract Attorneys: 31
 FYE 2015 Cases Opened: 1,323
 District Court Cases: 717
 Cases in Courts of Limited Jurisdiction: 606
 District Courts: 6
 Courts of Limited Jurisdiction: 16
 Sq. Miles: 22,858
 Region Population (2010 Census): 42,361
 Region Poverty Pop. (2010 Census): 7,809

Region 6

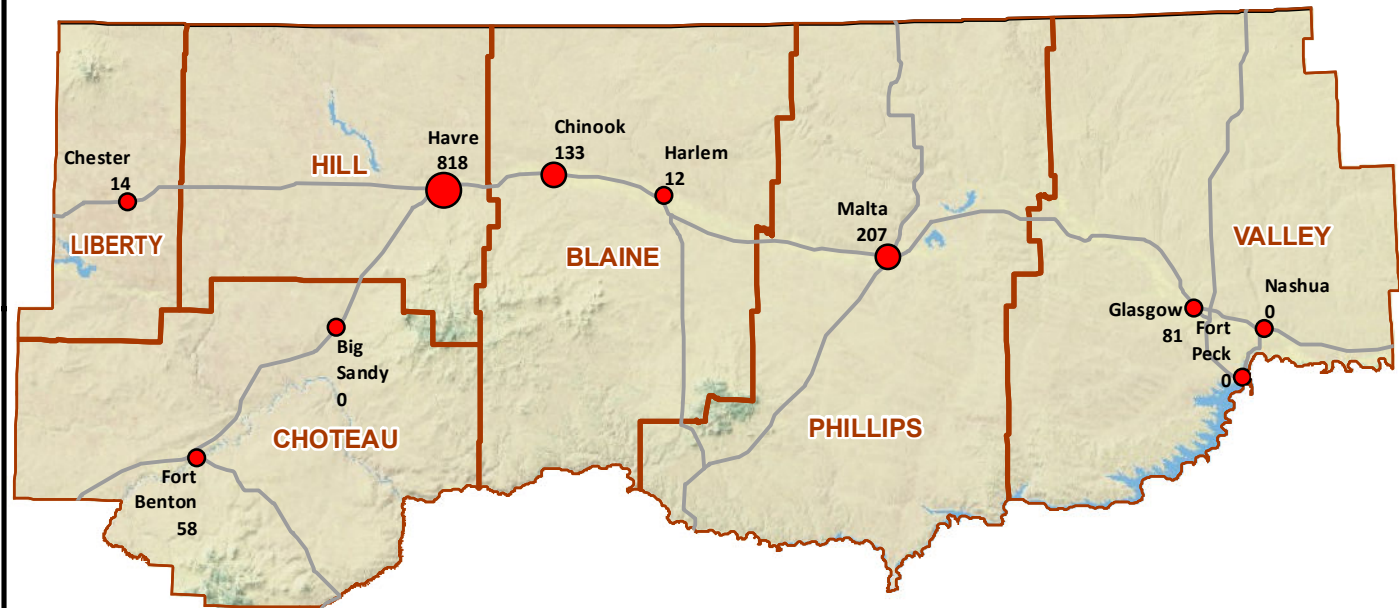
Total Opened Cases

- 0 - 125
- 126 - 550
- 551 - 1,250



Office of the State
Public Defender

OPD Total New Cases Opened in Fiscal Year 2015



10 5 0 10 20 30 40 Miles

REGION 7 LEWISTOWN

Attorneys: 2
 Support Staff: 1
 Investigators: 1
 Contract Attorneys: 38
 FYE 2015 Cases Opened: 657
 District Court Cases: 366
 Cases in Courts of Limited Jurisdiction: 291
 District Courts: 7
 Courts of Limited Jurisdiction: 17
 Sq. Miles: 14,748
 Region Population (2010 Census): 23,633
 Region Poverty Pop. (2010 Census): 3,655

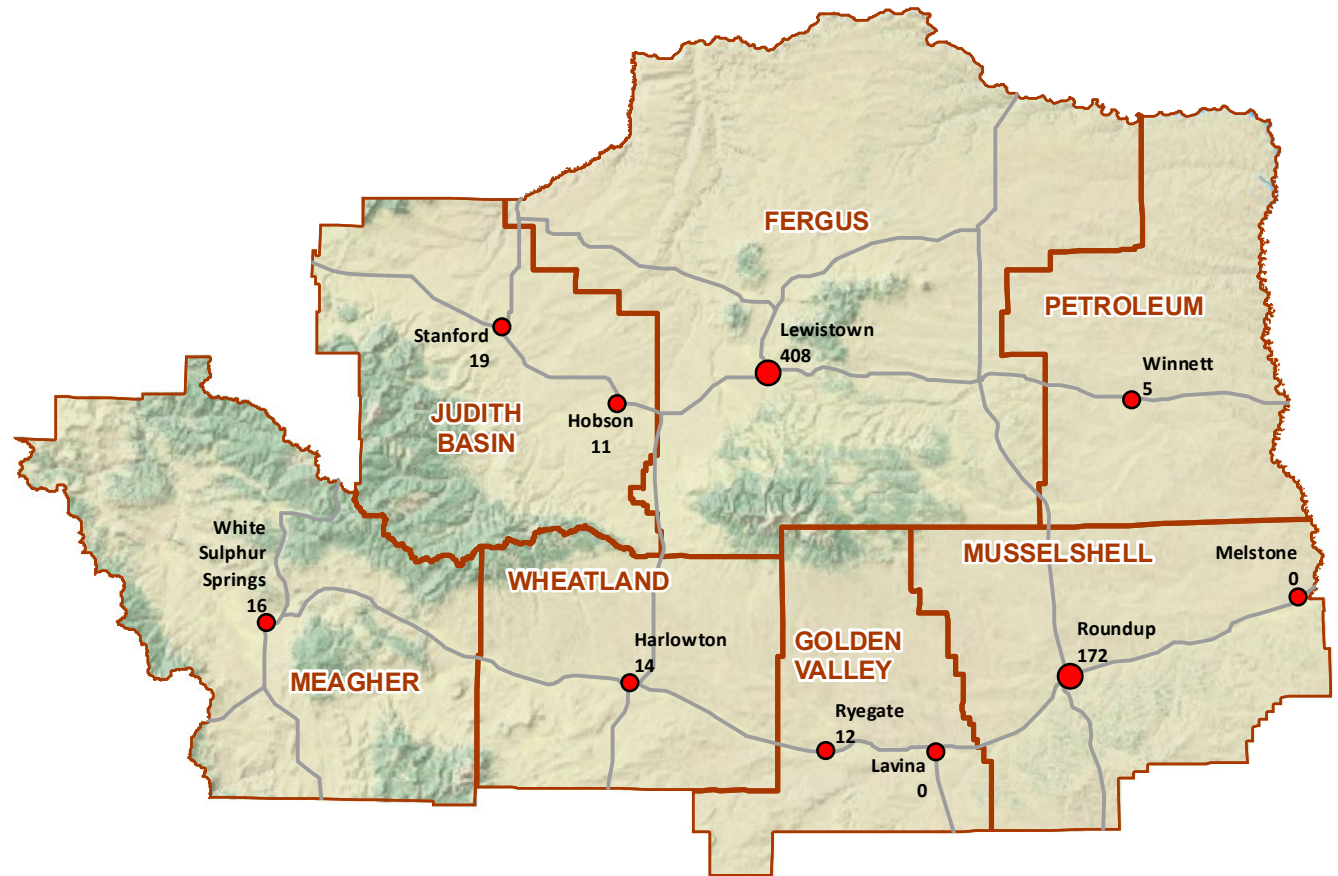
Region 7

Total Opened Cases

- 0 - 125
- 126 - 550



OPD Total New Cases Opened in Fiscal Year 2015



REGION 8 BOZEMAN

Attorneys: 10
 Support Staff: 6
 Investigators: 2
 Contract Attorneys: 25
 FYE 2015 Cases Opened: 2,615
 District Court Cases: 693
 Cases in Courts of Limited Jurisdiction: 1,922
 District Courts: 3
 Courts of Limited Jurisdiction: 10
 Sq. Miles: 7,303
 Region Population (2010 Census): 108,800
 Region Poverty Pop. (2010 Census): 13,632

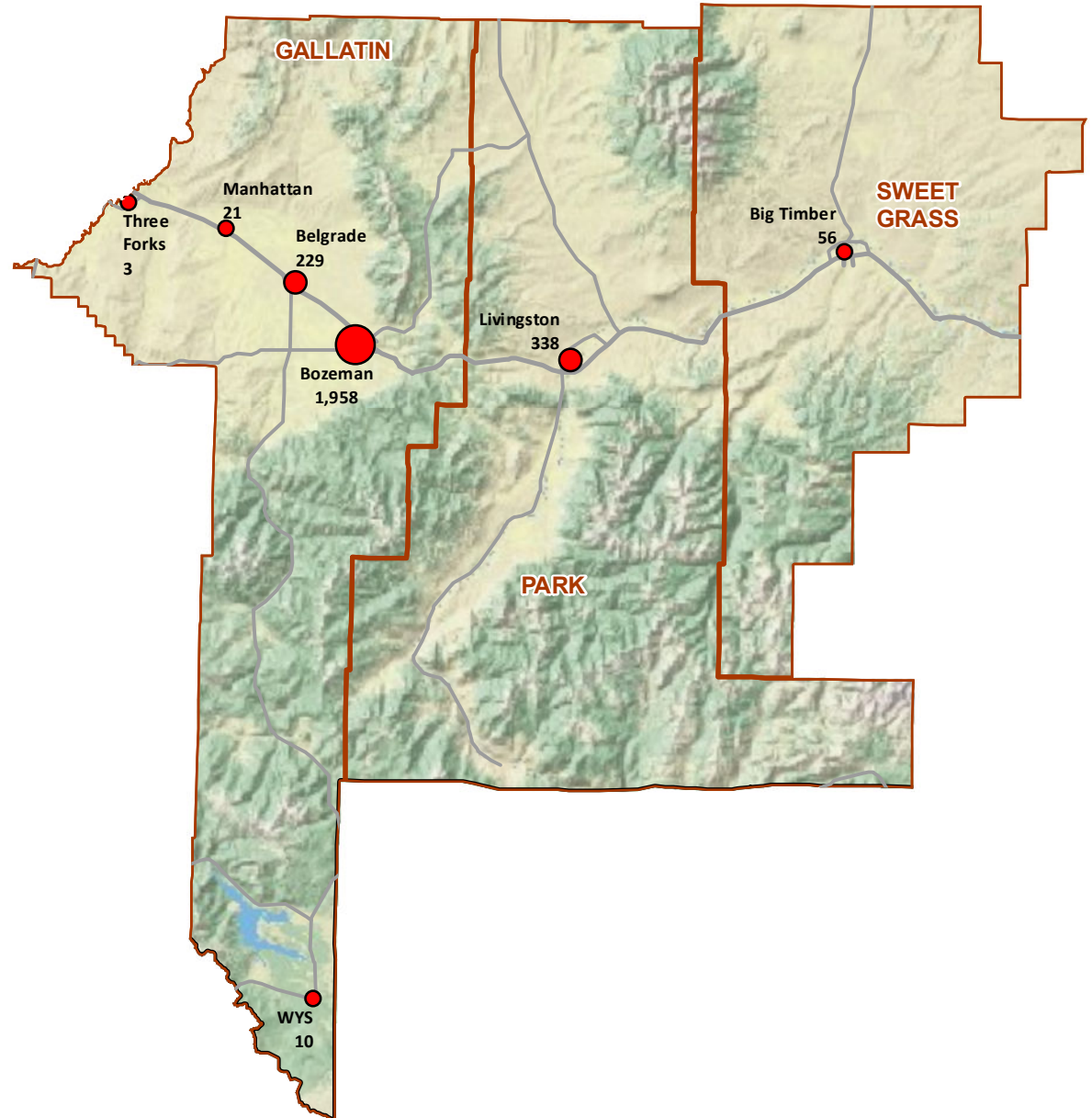
Region 8

Total Opened Cases

- 0 - 125
- 126 - 550
- 1,251 - 2,750



OPD Total New Cases Opened in Fiscal Year 2015



REGION 9 BILLINGS

Attorneys: 21
 Support Staff: 10
 Investigators: 3
 Contract Attorneys: 53
 FYE 2015 Cases Opened: 7,446
 District Court Cases: 2,595
 Cases in Courts of Limited Jurisdiction: 4,851
 District Courts: 4
 Courts of Limited Jurisdiction: 13
 Sq. Miles: 11,524
 Region Population (2010 Census): 180,032
 Region Poverty Pop. (2010 Census): 24,207

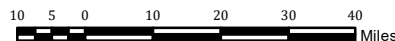
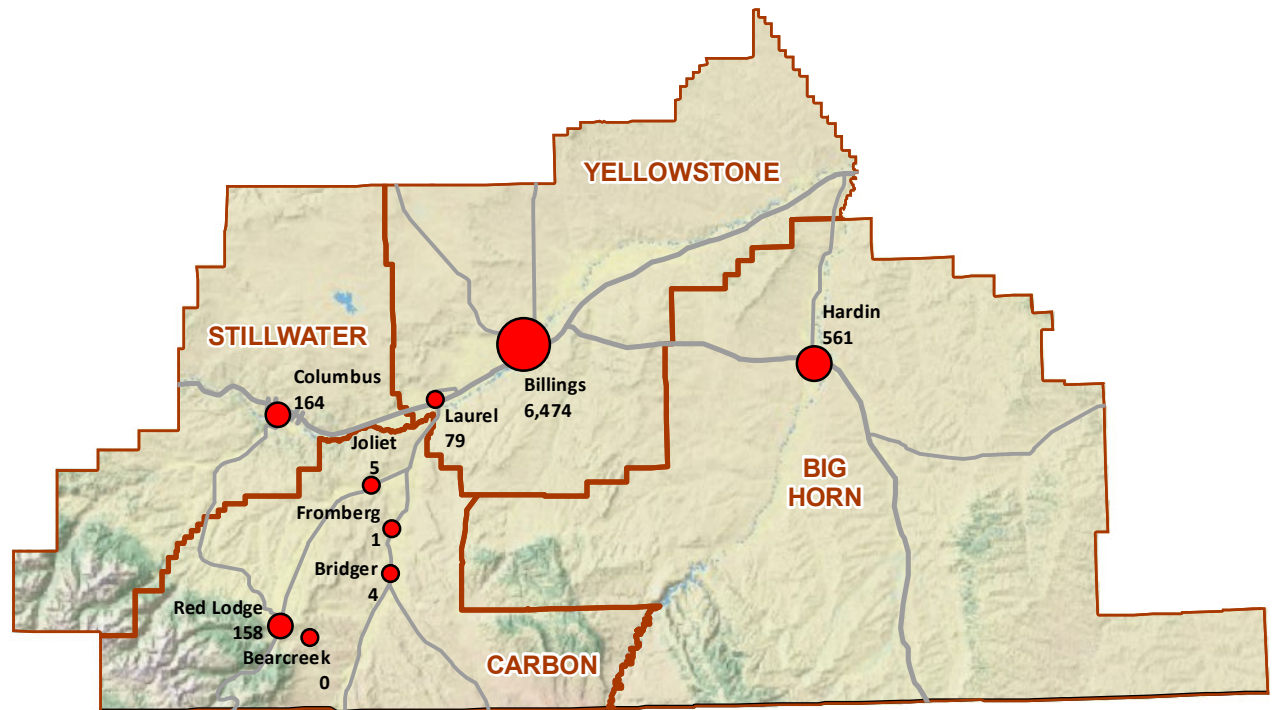
Region 9

Total Opened Cases

- 0 - 125
- 126 - 550
- 551 - 1,250
- 2,751 - 6,500



OPD Total New Cases Opened in Fiscal Year 2015



REGION 10 GLENDIVE

Attorneys: 3
 Support Staff: 1
 Investigators: 1
 Contract Attorneys: 25
 FYE 2015 Cases Opened: 901
 District Court Cases: 478
 Cases in Courts of Limited Jurisdiction: 423
 District Courts: 8
 Courts of Limited Jurisdiction: 19
 Sq. Miles: 15,290
 Region Population (2010 Census): 38,202
 Region Poverty Pop. (2010 Census): 6,116

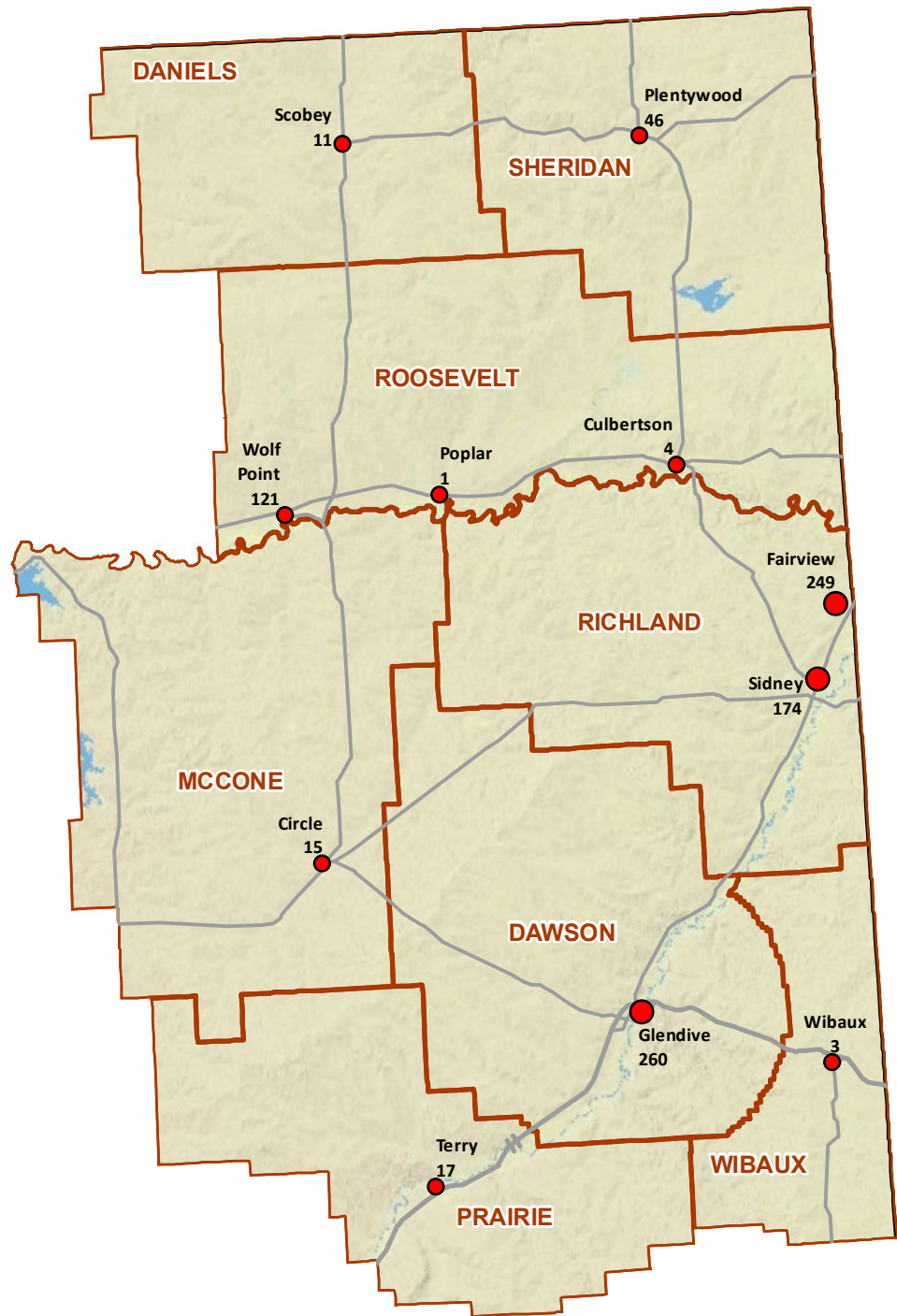
Region 10

Total Opened Cases

- 0 - 125
- 126 - 550



OPD Total New Cases Opened in Fiscal Year 2015



REGION 11 MILES CITY

Attorneys: 2
 Support Staff: 1
 Investigators: 1
 Contract Attorneys: 26
 FYE 2015 Cases Opened: 652
 District Court Cases: 301
 Cases in Courts of Limited Jurisdiction: 351
 District Courts: 7
 Courts of Limited Jurisdiction: 16
 Sq. Miles: 22,900
 Region Population (2010 Census): 28,649
 Region Poverty Pop. (2010 Census): 4,427

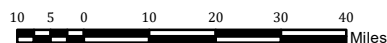
Region 11

Total Opened Cases

- 0 - 125
- 126 - 550



OPD Total New Cases Opened in Fiscal Year 2015





	Attorney	Support Staff	Investigators	Contract Attorneys
Central Services	4	15	0.5	
Appellate Defender	10	3		34
Major Crimes	4	2		2
Conflict Office	2	1		231



OPD Staffing for Central Services, Appellate, Major Crimes & Conflict Office

