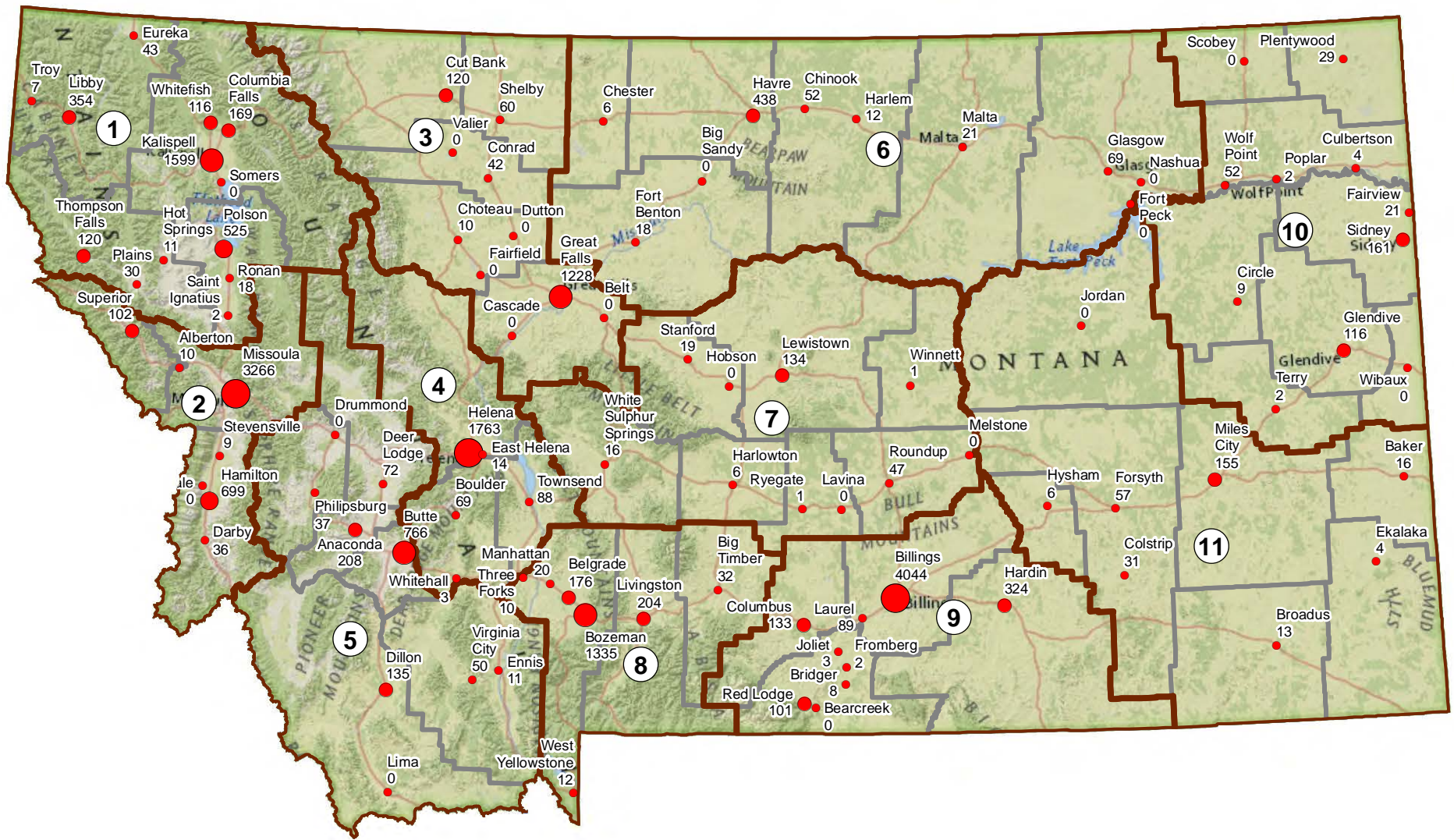




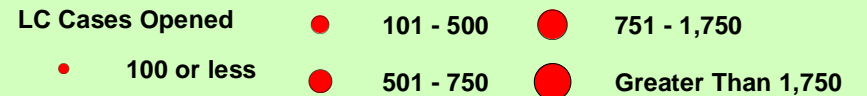
Office of the State Public Defender

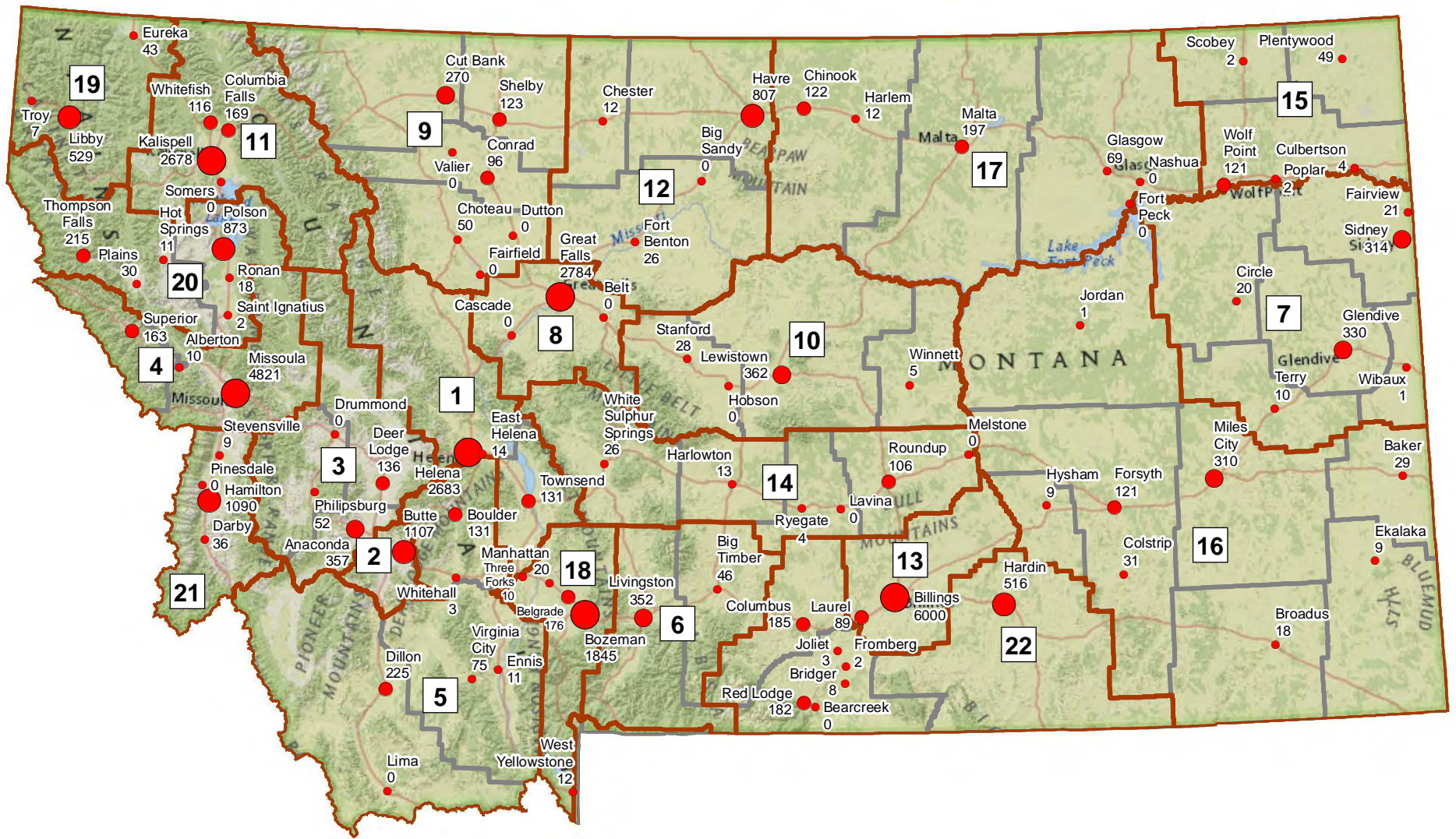
FY 14 Agency Statistics





New Cases Opened in Courts of Limited Jurisdiction - Fiscal Year 2014





Total New Cases Opened - Fiscal Year 2014 by Judicial Districts



REGION 1 KALISPELL

Attorneys: 18.5
 Support Staff: 8
 Investigators: 3
 Contract Attorneys: 36
 FYE 2014 Cases Opened: 4,691
 District Court Cases: 1,697
 Cases in Courts of Limited Jurisdiction: 2,994
 District Courts: 4
 Courts of Limited Jurisdiction: 16
 Sq. Miles: 13,365
 Region Population (2010 Census): 150,774
 Region Poverty Pop. (2010 Census): 25,219

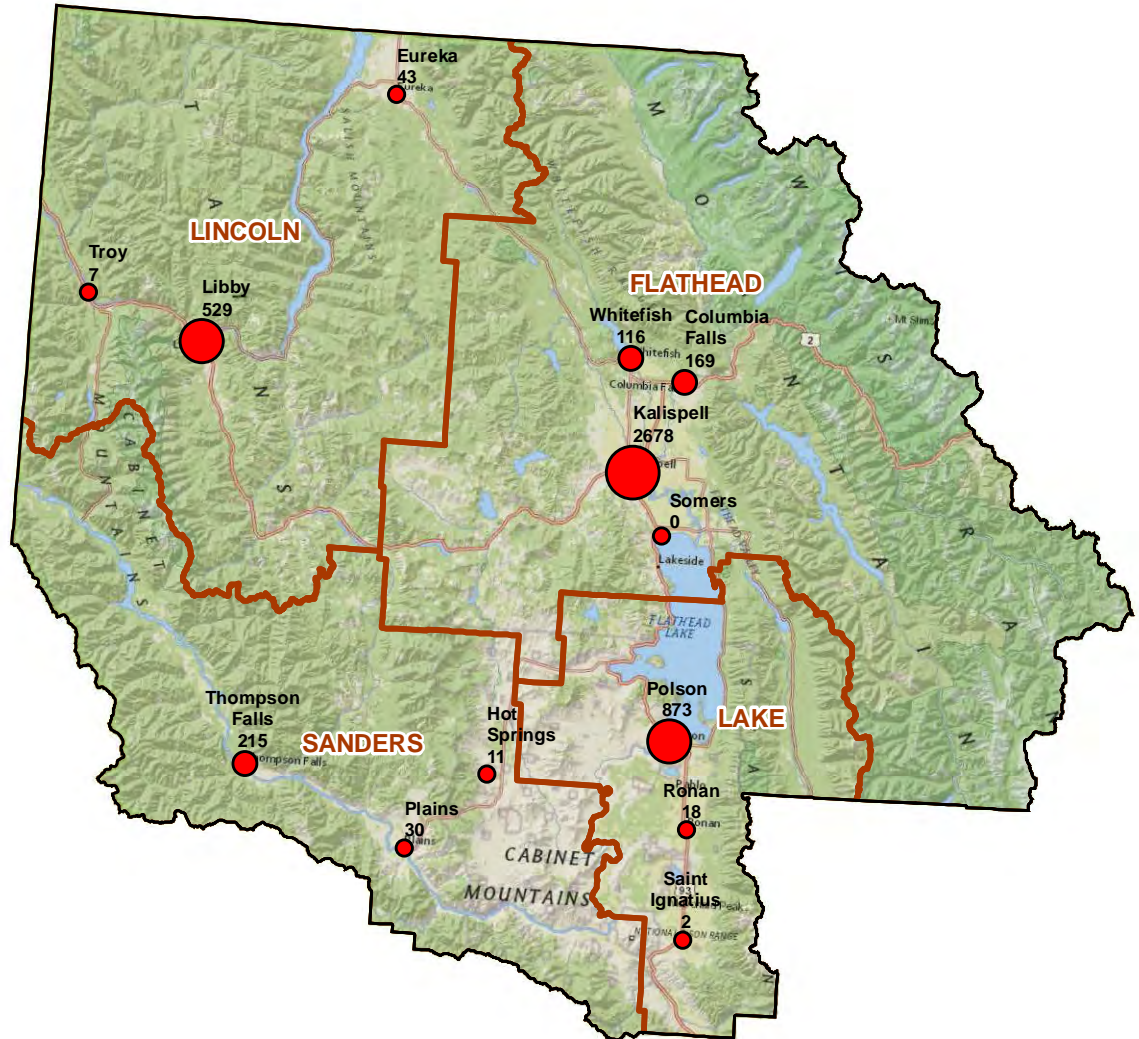
Region 1

Total Opened Cases

- 75 or Less
- 76 - 250
- 251 - 500
- 501 - 1,750
- Greater Than 1,750



OPD Total New Cases Opened in Fiscal Year 2014



REGION 2 MISSOULA

Attorneys: 24.5
 Support Staff: 11
 Investigators: 3
 Contract Attorneys: 55
 FYE 2014 Cases Opened: 6,129
 District Court Cases: 2,007
 Cases in Courts of Limited Jurisdiction: 4,122
 District Courts: 3
 Courts of Limited Jurisdiction: 10
 Sq. Miles: 6,235
 Region Population (2010 Census): 153,734
 Region Poverty Pop. (2010 Census): 23,620

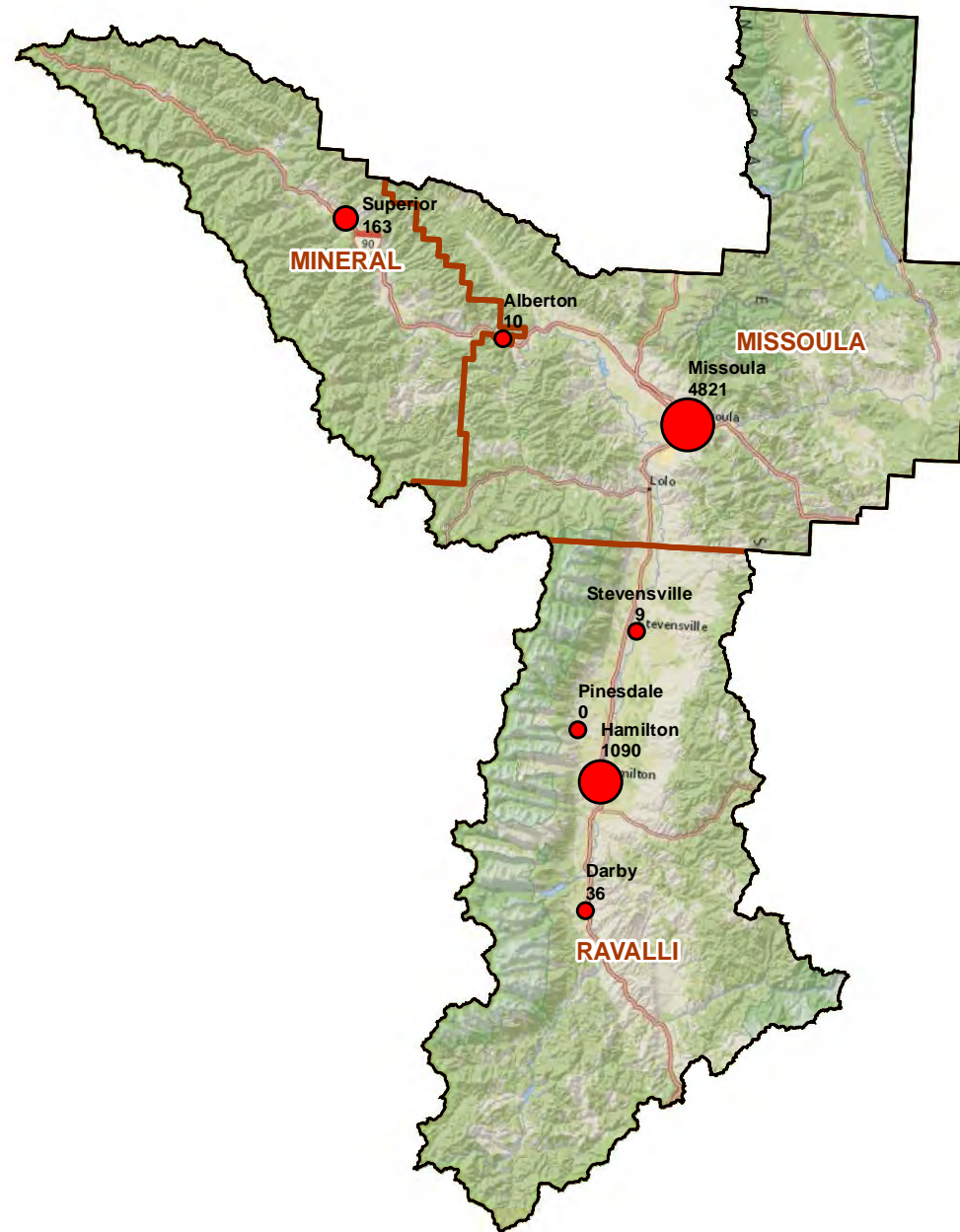
Region 2

Total Opened Cases

- 75 or Less
- 76 - 250
- 251 - 500
- 501 - 1,750
- Greater Than 1,750



OPD Total New Cases Opened in Fiscal Year 2014



REGION 3 GREAT FALLS

Attorneys: 12
 Support Staff: 7
 Investigators: 2
 Contract Attorneys: 31
 FYE 2014 Cases Opened: 3,323
 District Court Cases: 1,863
 Cases in Courts of Limited Jurisdiction: 1,460
 District Courts: 5
 Courts of Limited Jurisdiction: 16
 Sq. Miles: 11,618
 Region Population (2010 Census): 112,276
 Region Poverty Pop. (2010 Census): 17,237

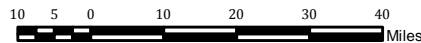
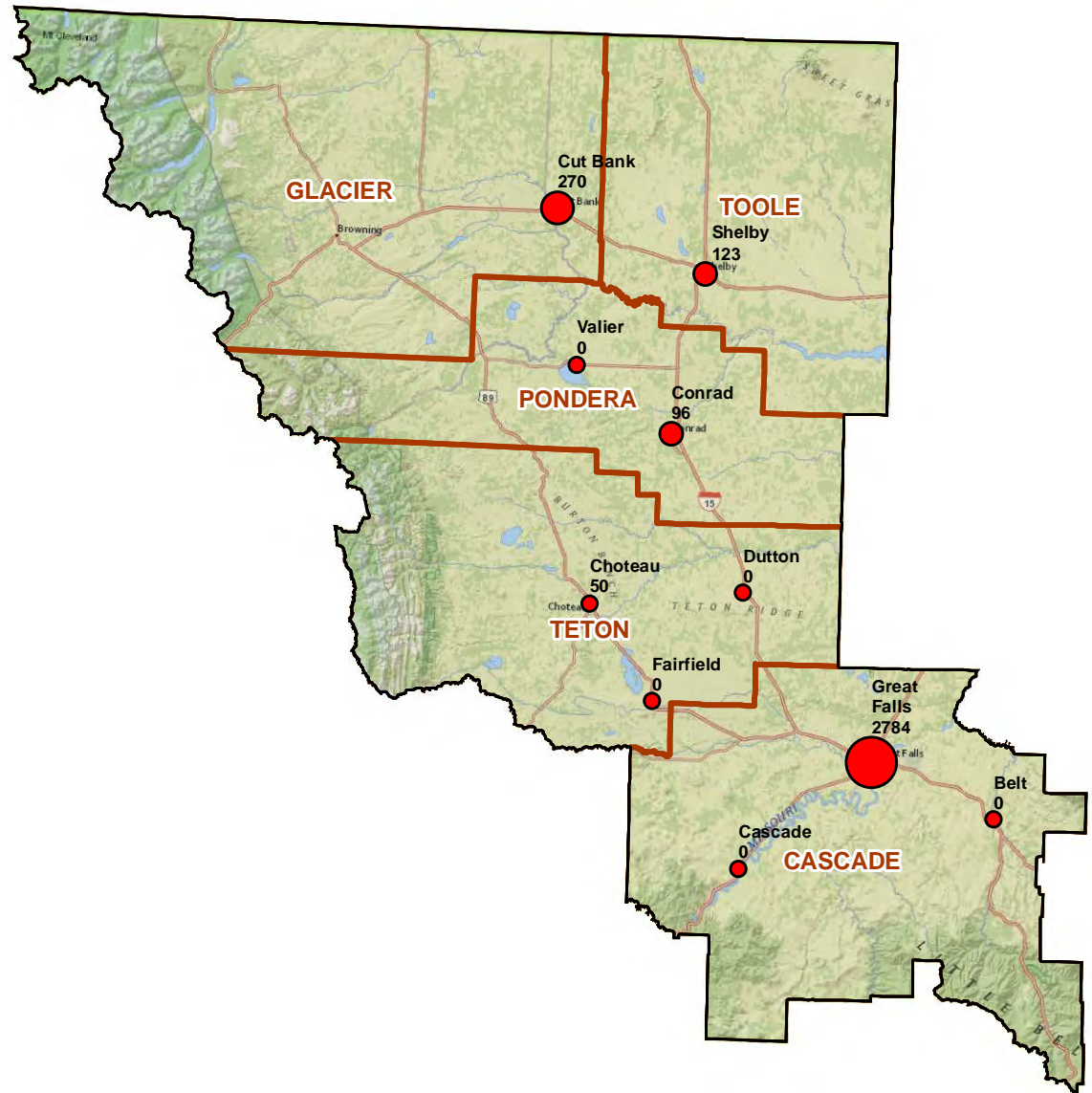
Region 3

Total Opened Cases

- 75 or Less
- 76 - 250
- 251 - 500
- 501 - 1,750
- Greater Than 1,750



OPD Total New Cases Opened in Fiscal Year 2014



REGION 4 HELENA

Attorneys: 13
 Support Staff: 6.5
 Investigators: 1
 Contract Attorneys: 23
 FYE 2014 Cases Opened: 2,962
 District Court Cases: 1,025
 Cases in Courts of Limited Jurisdiction: 1,937
 District Courts: 3
 Courts of Limited Jurisdiction: 8
 Sq. Miles: 6,388
 Region Population (2010 Census): 80,413
 Region Poverty Pop. (2010 Census): 8,813

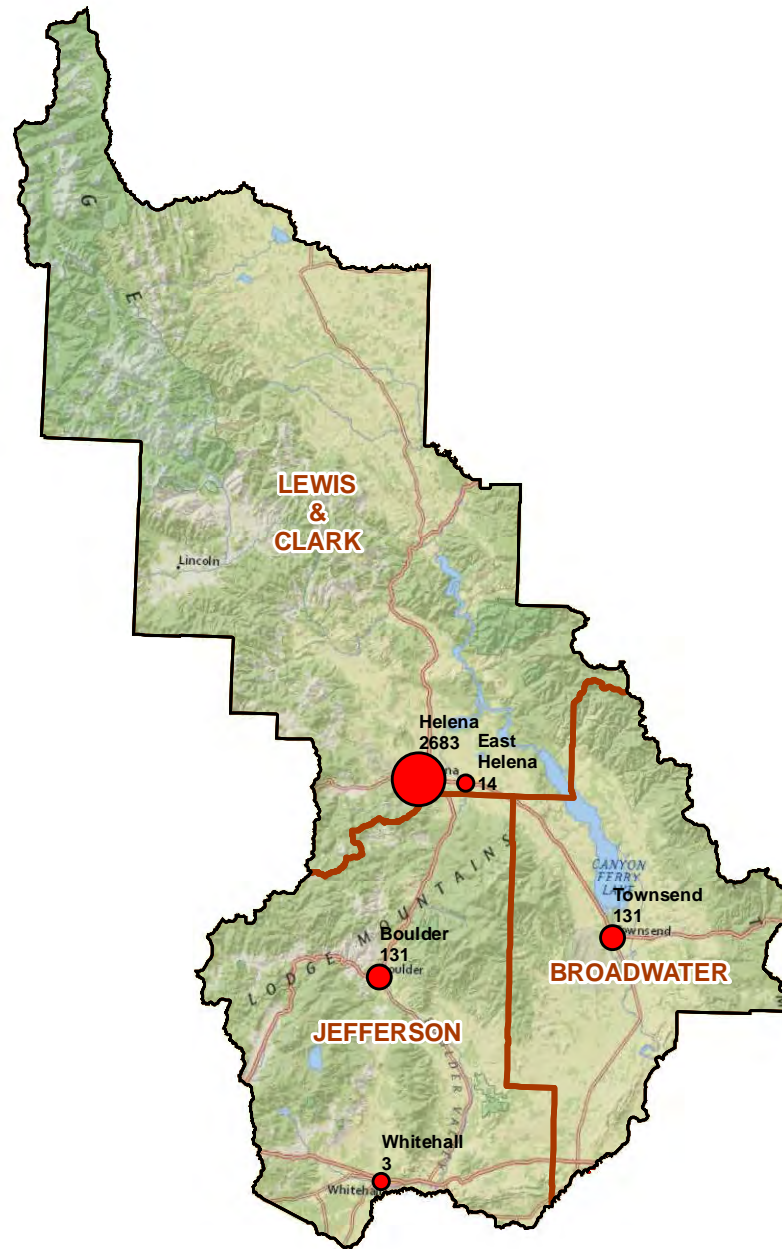
Region 4

Total Opened Cases

- 75 or Less
- 76 - 250
- 251 - 500
- 501 - 1,750
- Greater Than 1,750



OPD Total New Cases Opened in Fiscal Year 2014



REGION 5 BUTTE

Attorneys: 9
 Support Staff: 4
 Investigators: 1.5
 Contract Attorneys: 22
 FYE 2014 Cases Opened: 1,963
 District Court Cases: 684
 Cases in Courts of Limited Jurisdiction: 1,279
 District Courts: 6
 Courts of Limited Jurisdiction: 14
 Sq. Miles: 14,693
 Region Population (2010 Census): 70,541
 Region Poverty Pop. (2010 Census): 11,524

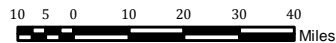
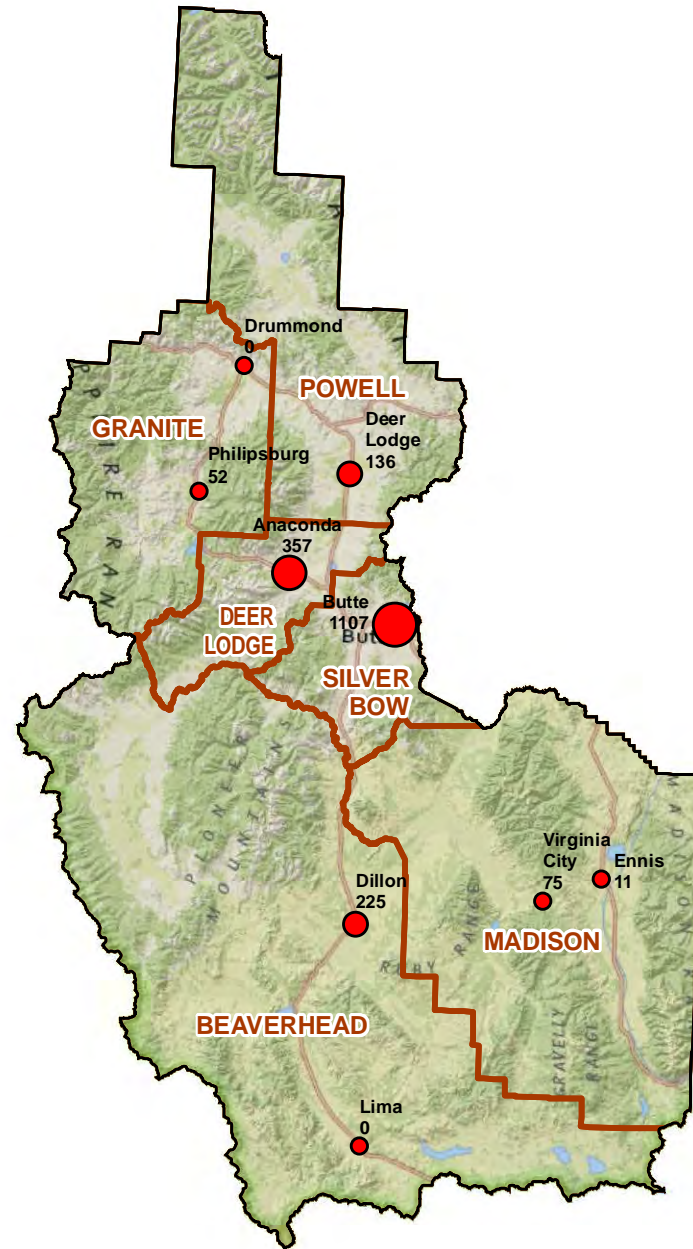
Region 5

Total Opened Cases

- 75 or Less
- 76 - 250
- 251 - 500
- 501 - 1,750
- Greater Than 1,750



OPD Total New Cases Opened in Fiscal Year 2014



REGION 6 HAVRE

Attorneys: 4
 Support Staff: 2
 Investigators: 1
 Contract Attorneys: 12
 FYE 2014 Cases Opened: 1,245
 District Court Cases: 629
 Cases in Courts of Limited Jurisdiction: 616
 District Courts: 6
 Courts of Limited Jurisdiction: 16
 Sq. Miles: 22,858
 Region Population (2010 Census): 42,361
 Region Poverty Pop. (2010 Census): 7,809

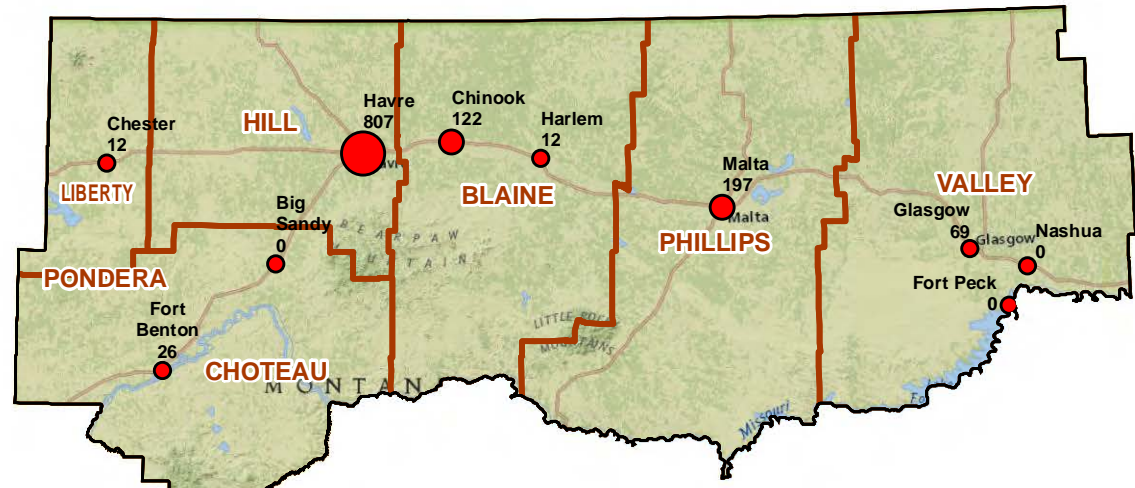
Region 6

Total Opened Cases

- 75 or Less
- 76 - 250
- 251 - 500
- 501 - 1,750
- Greater Than 1,750



OPD Total New Cases Opened in Fiscal Year 2014



REGION 7 LEWISTOWN

Attorneys: 2
 Support Staff: 1
 Investigators: 0.5
 Contract Attorneys: 21
 FYE 2014 Cases Opened: 544
 District Court Cases: 320
 Cases in Courts of Limited Jurisdiction: 224
 District Courts: 7
 Courts of Limited Jurisdiction: 17
 Sq. Miles: 14,748
 Region Population (2010 Census): 23,633
 Region Poverty Pop. (2010 Census): 3,655

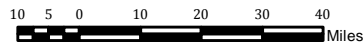
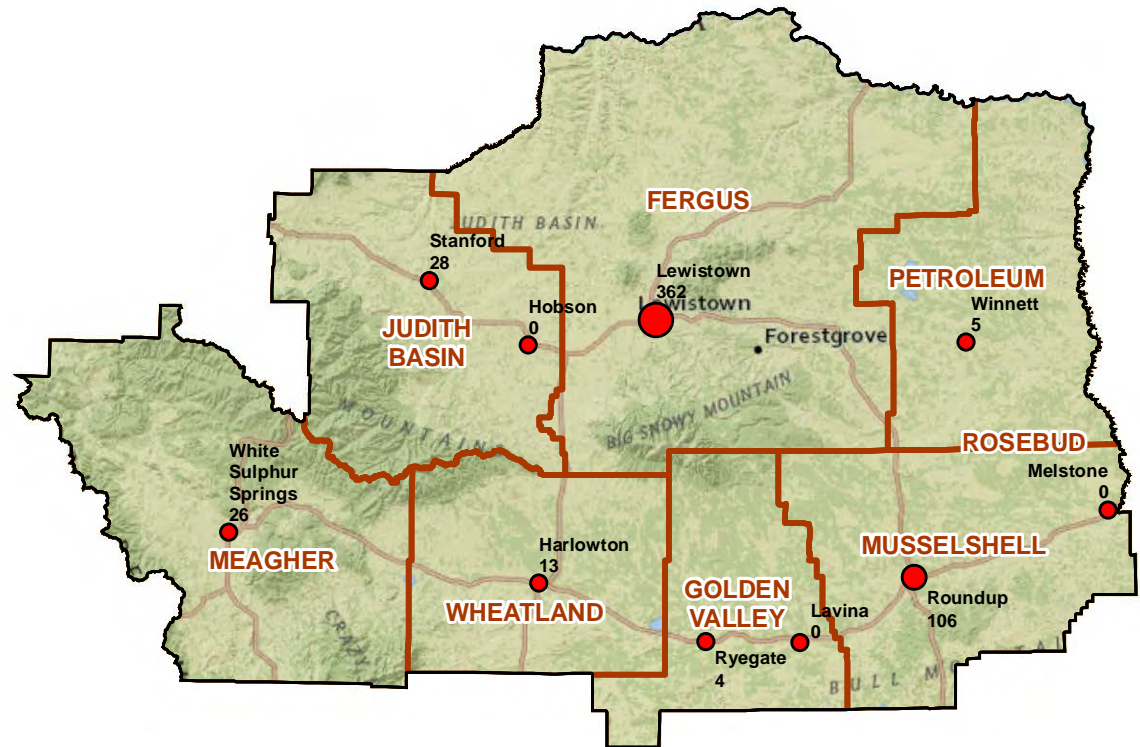
Region 7

Total Opened Cases

- 75 or Less
- 76 - 250
- 251 - 500
- 501 - 1,750
- Greater Than 1,750



OPD Total New Cases Opened in Fiscal Year 2014



REGION 8 BOZEMAN

Attorneys: 10
 Support Staff: 6
 Investigators: 2
 Contract Attorneys: 27
 FYE 2014 Cases Opened: 2,461
 District Court Cases: 672
 Cases in Courts of Limited Jurisdiction: 1,789
 District Courts: 3
 Courts of Limited Jurisdiction: 10
 Sq. Miles: 7,303
 Region Population (2010 Census): 108,800
 Region Poverty Pop. (2010 Census): 13,632

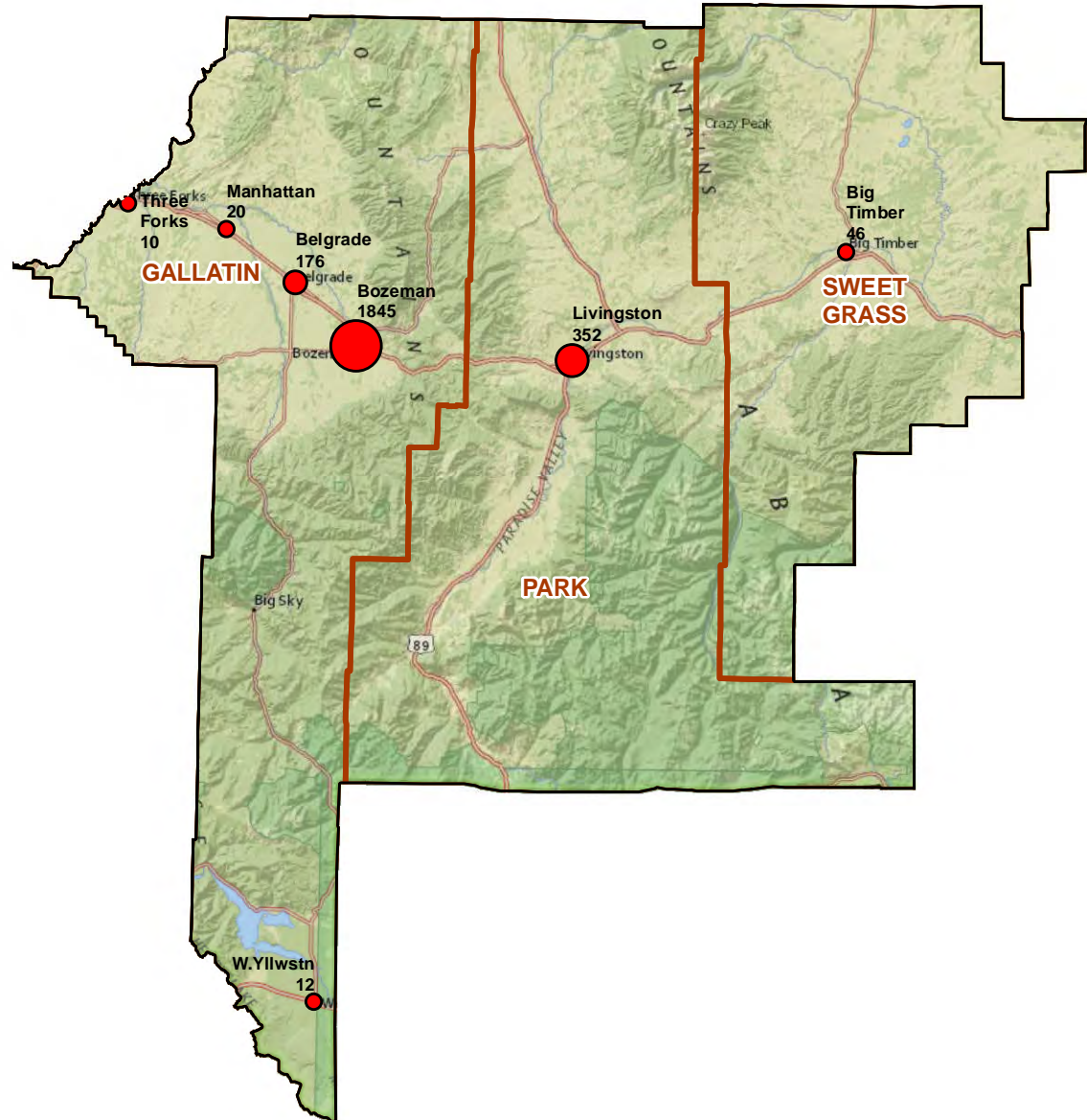
Region 8

Total Opened Cases

- 75 or Less
- 76 - 250
- 251 - 500
- 501 - 1,750
- Greater Than 1,750



OPD Total New Cases Opened in Fiscal Year 2014



REGION 9 BILLINGS

Attorneys: 22
 Support Staff: 11
 Investigators: 3
 Contract Attorneys: 46
 FYE 2014 Cases Opened: 6,985
 District Court Cases: 2,281
 Cases in Courts of Limited Jurisdiction: 4,704
 District Courts: 4
 Courts of Limited Jurisdiction: 13
 Sq. Miles: 11,524
 Region Population (2010 Census): 180,032
 Region Poverty Pop. (2010 Census): 24,207

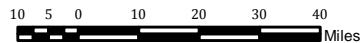
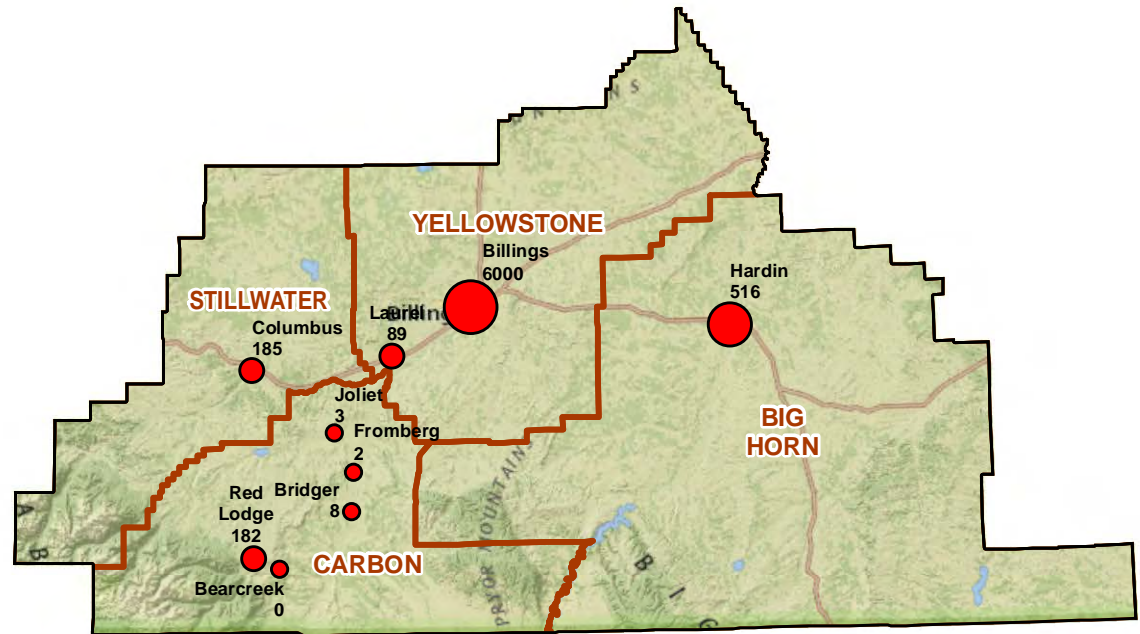
Region 9

Total Opened Cases

- 75 or Less
- 76 - 250
- 251 - 500
- 501 - 1,750
- Greater Than 1,750



OPD Total New Cases Opened in Fiscal Year 2014



REGION 10 GLEN DIVE

Attorneys: 3
 Support Staff: 1
 Investigators: 1
 Contract Attorneys: 19
 FYE 2014 Cases Opened: 874
 District Court Cases: 478
 Cases in Courts of Limited Jurisdiction: 396
 District Courts: 8
 Courts of Limited Jurisdiction: 19
 Sq. Miles: 15,290
 Region Population (2010 Census): 38,202
 Region Poverty Pop. (2010 Census): 6,116

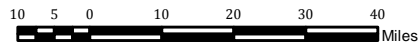
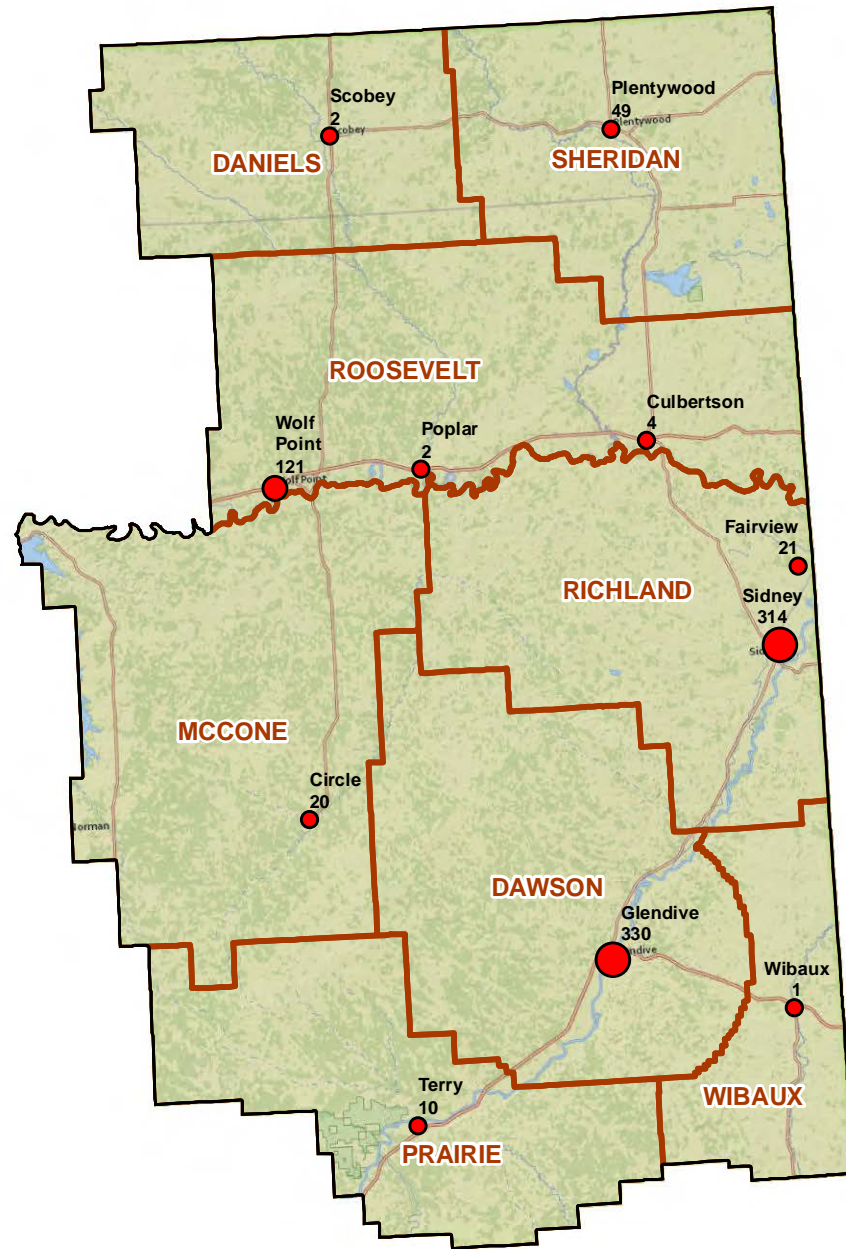
Region 10

Total Opened Cases

- 75 or Less
- 76 - 250
- 251 - 500
- 501 - 1,750
- Greater Than 1,750



OPD Total New Cases Opened in Fiscal Year 2014



REGION 11 MILES CITY

Attorneys: 2
 Support Staff: 1
 Investigators: 1
 Contract Attorneys: 19
 FYE 2014 Cases Opened: 528
 District Court Cases: 246
 Cases in Courts of Limited Jurisdiction: 282
 District Courts: 7
 Courts of Limited Jurisdiction: 16
 Sq. Miles: 22,900
 Region Population (2010 Census): 28,649
 Region Poverty Pop. (2010 Census): 4,427

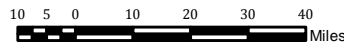
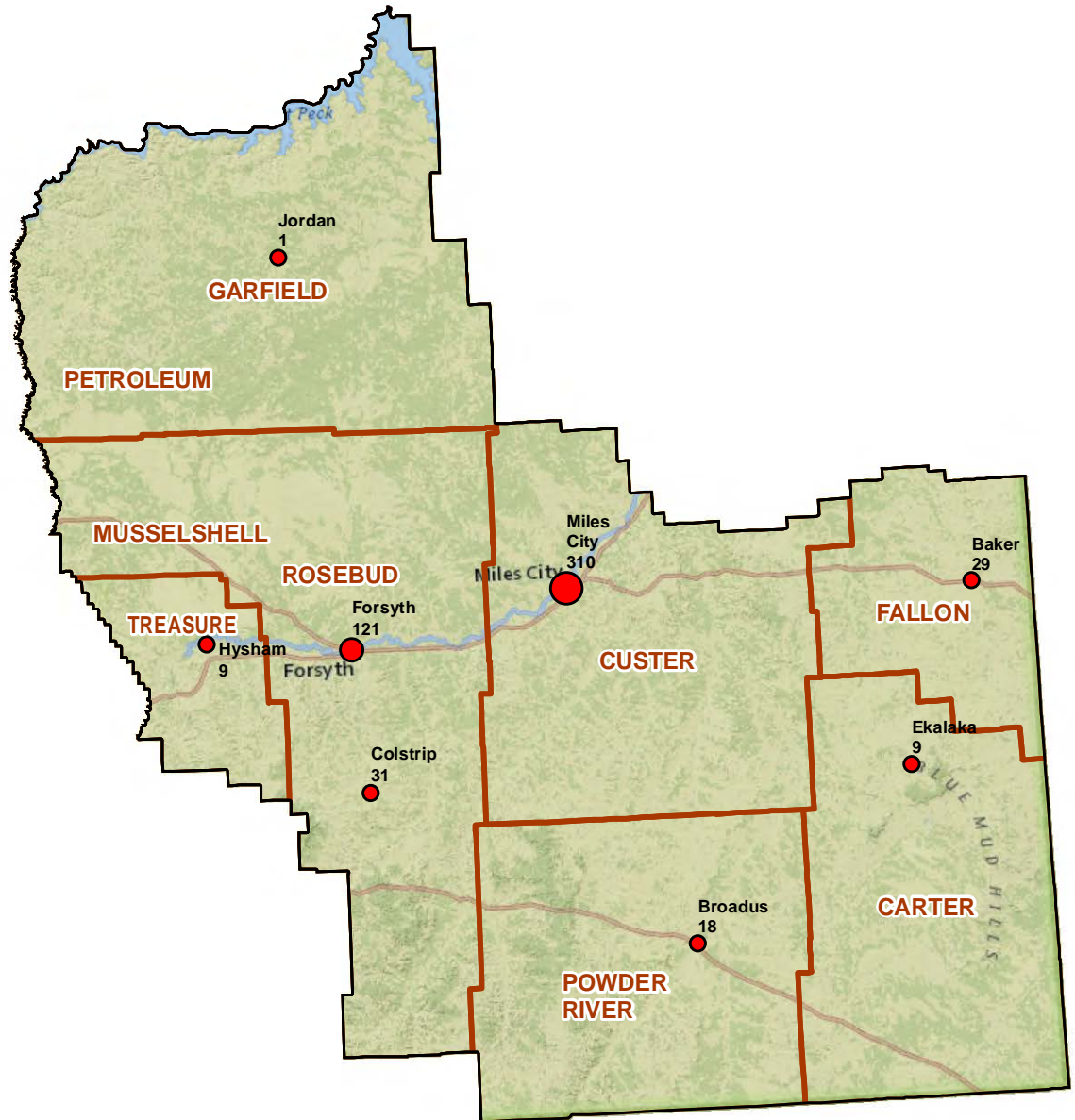
Region 11

Total Opened Cases

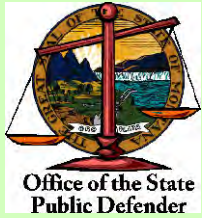
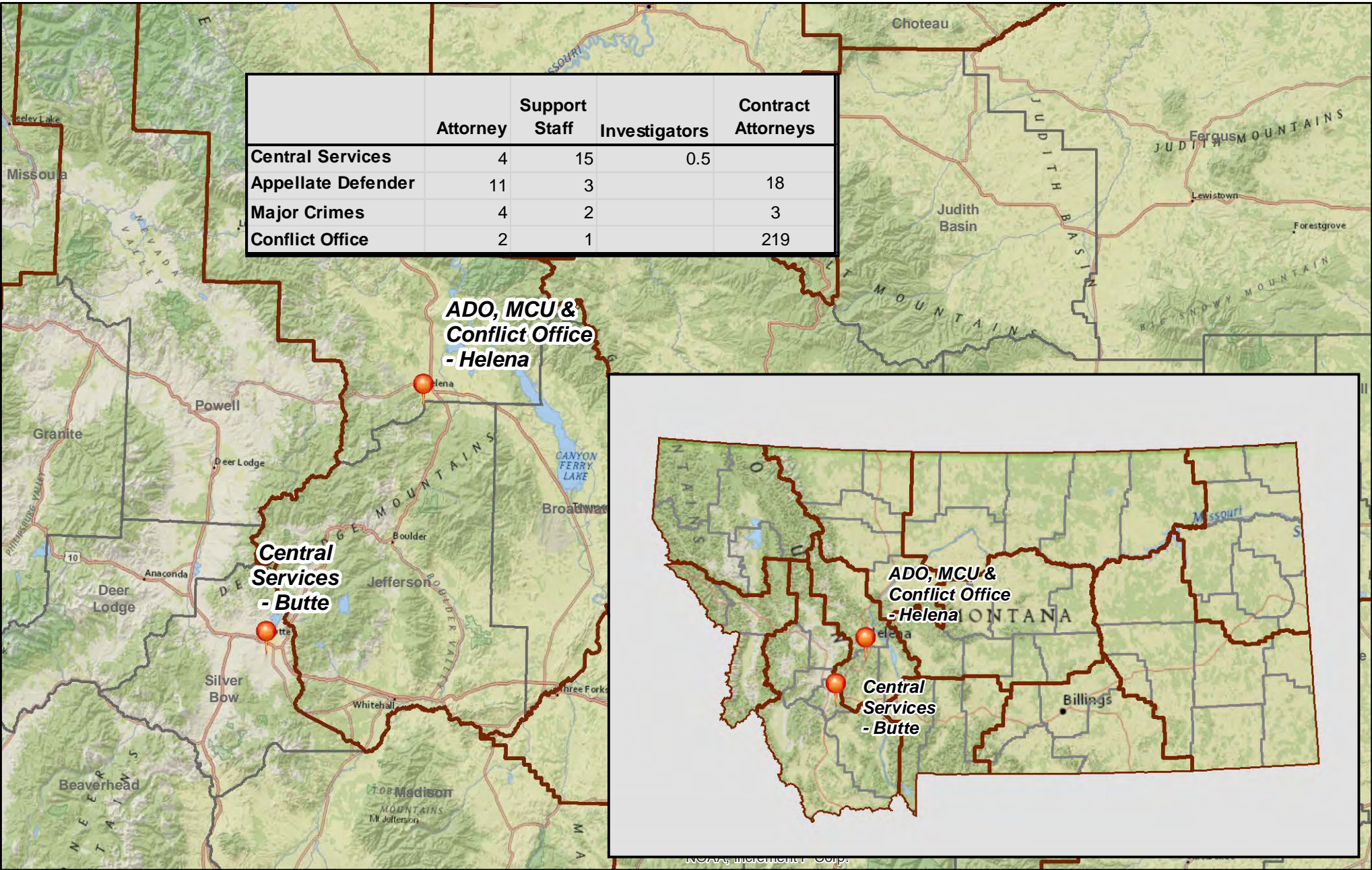
- 75 or Less
- 76 - 250
- 251 - 500
- 501 - 1,750
- Greater Than 1,750



OPD Total New Cases Opened in Fiscal Year 2014



	Attorney	Support Staff	Investigators	Contract Attorneys
Central Services	4	15	0.5	
Appellate Defender	11	3		18
Major Crimes	4	2		3
Conflict Office	2	1		219



OPD Staffing for Central Services, Appellate, Major Crimes & Conflict Office

