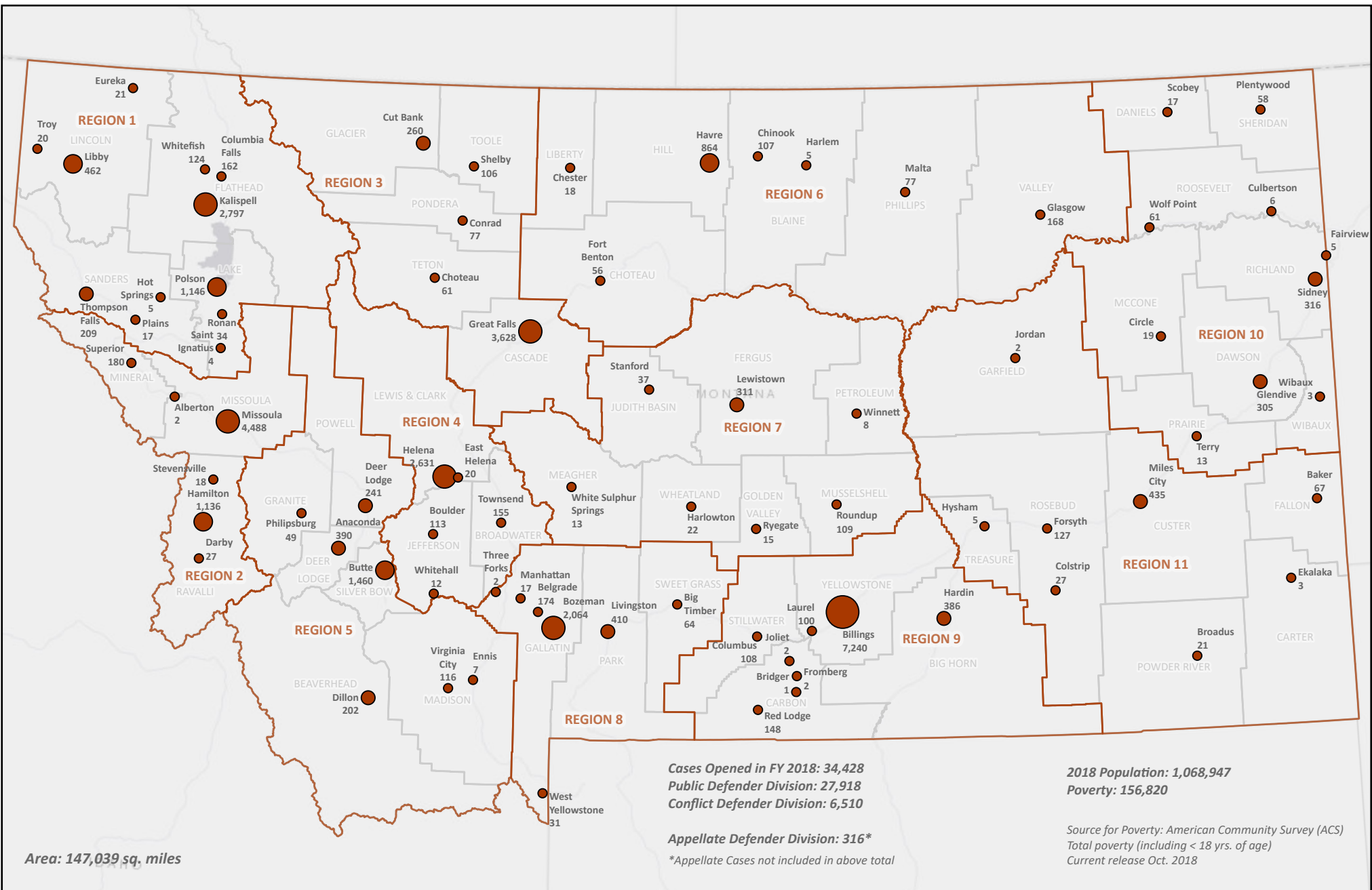


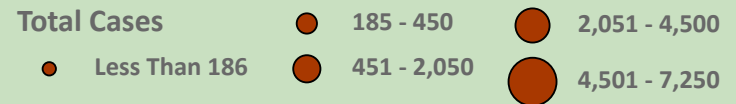
OPD Office Locations

Office Type

- Regional Office
- Satellite Office
- Central Office, Appellate Office & Conflict Division Offices



Total Cases Opened FY 2018 Divisions 1 & 3



Region 1 - Kalispell

2018 Opened Cases

Total Cases

- Less than 186
- 186 - 450

- 450 - 2,050
- 2,051 - 4,500

Division 1

Attorneys: 21.0
 Support Staff: 8.0
 Investigators: 3.0
 Social Workers: 1.0
 Contract Attorneys: 38.0

Division 3

Attorneys: 0.5
 Support Staff: 0.0
 Investigators: 0.0

Total Cases Opened FY18: 5,001

- District Cases Opened: 2,014
- Cases Opened Courts of Limited Jurisdiction: 2,987

Number of District Courts: 4

Number of Courts of Limited Jurisdiction: 16

Number of Treatment Courts: 1

Regional Demographics

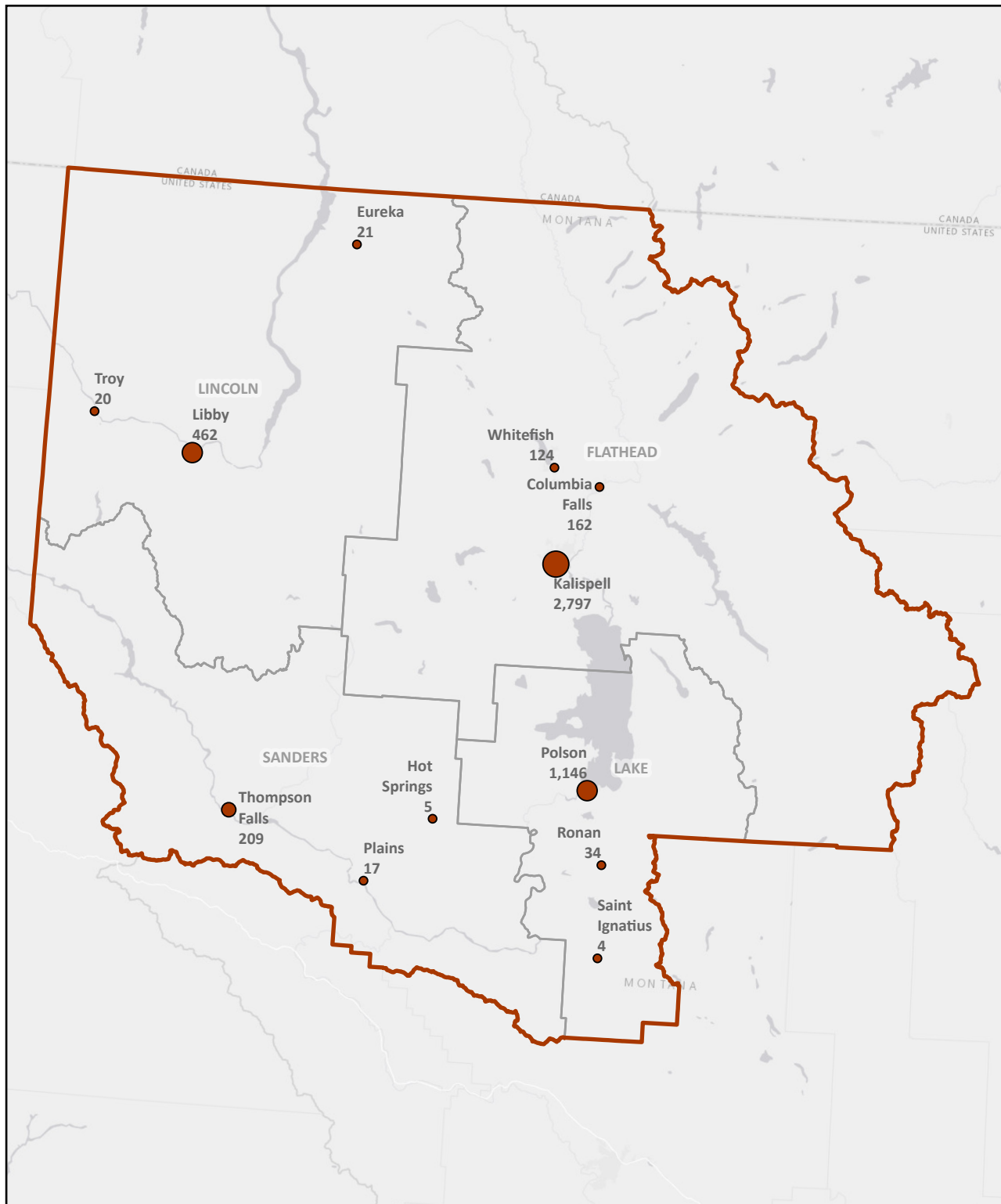
2018 Total Population: 163,590

2018 Poverty Pop.*: 26,671

Area (sq. mi.): 13,375

Population Density per sq. mi.: 12.23

**Source for Poverty: American Community Survey (ACS)
 Total poverty (including < 18 yrs. of age)
 Current release Oct. 2018*



Region 2 - Missoula

2018 Opened Cases

Total Cases

● Less than 186

● 450 - 2,050

● 2,051 - 4,500

Division 1

Attorneys: 26.0

Support Staff: 10.0

Investigators: 4.0

Social Workers: 2.0

Contract Attorneys: 58.0

Division 3

Attorneys: 7.0

Support Staff: 1.0

Investigators: 1.0

Total Cases Opened FY18: 5,851

· District Cases Opened: 2,251

· Cases Opened Courts of Limited Jurisdiction: 3,600

Number of District Courts: 3

Number of Courts of Limited Jurisdiction: 10

Number of Treatment Courts: 4

Regional Demographics

2018 Total Population: 167,413

2018 Poverty Pop.*: 27,757

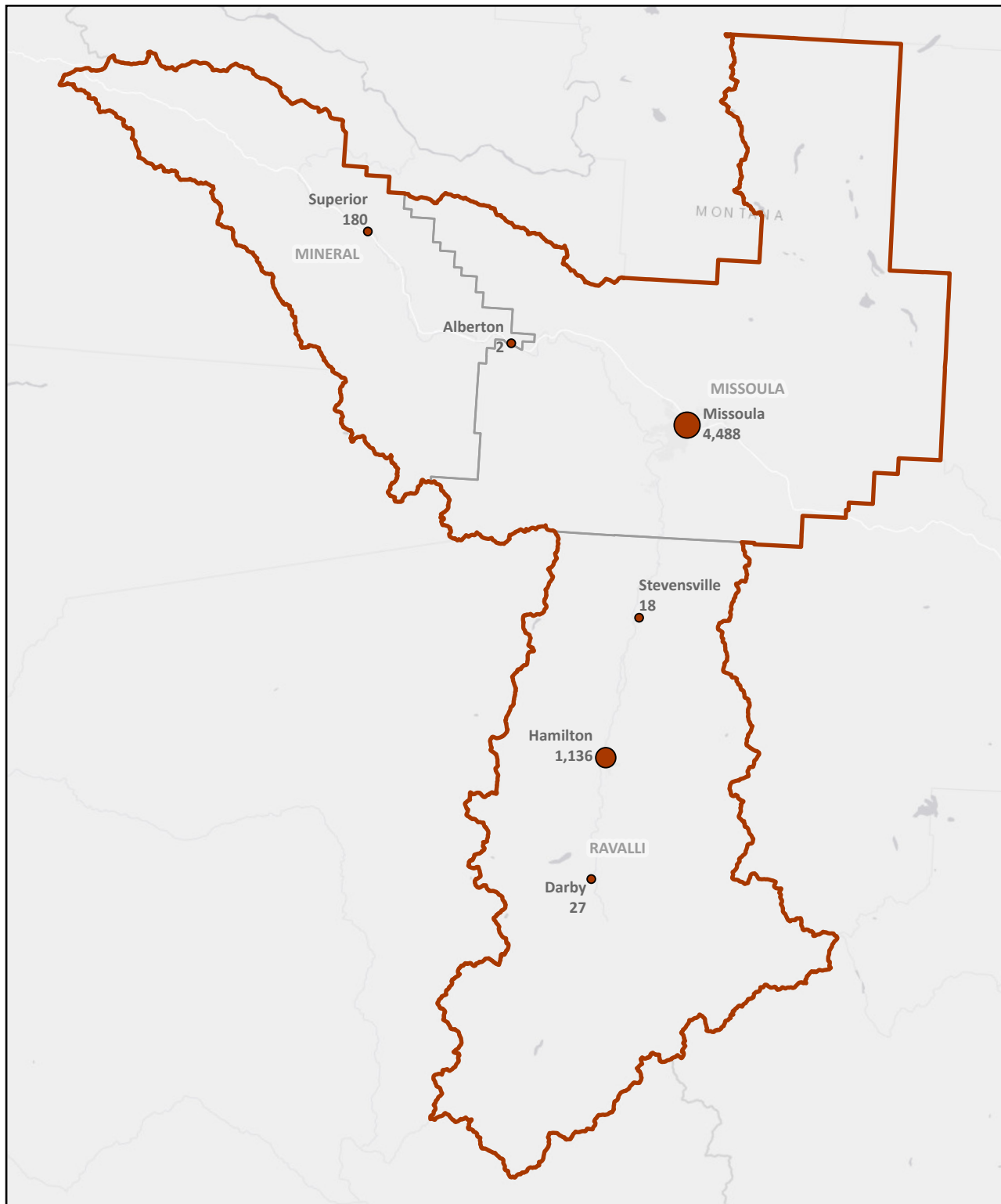
Area (sq. mi.): 6,242

Population Density per sq. mi.: 26.82

**Source for Poverty: American Community Survey (ACS)*

Total poverty (including < 18 yrs. of age)

Current release Oct. 2018



Region 3 - Great Falls

2018 Opened Cases

Total Cases

- Less than 186
- 186 - 450
- 2,051 - 4,500

Division 1

Attorneys: 14.0
Support Staff: 7.0
Investigators: 1.0
Social Workers: 1.0
Contract Attorneys: 56.0

Division 3

Attorneys: 1.0
Support Staff: 0.0
Investigators: 0.0

Total Cases Opened FY18: 4,132

- District Cases Opened: 2,262
- Cases Opened Courts of Limited Jurisdiction: 1,870

Number of District Courts: 5

Number of Courts of Limited Jurisdiction: 16

Number of Treatment Courts: 3

Regional Demographics

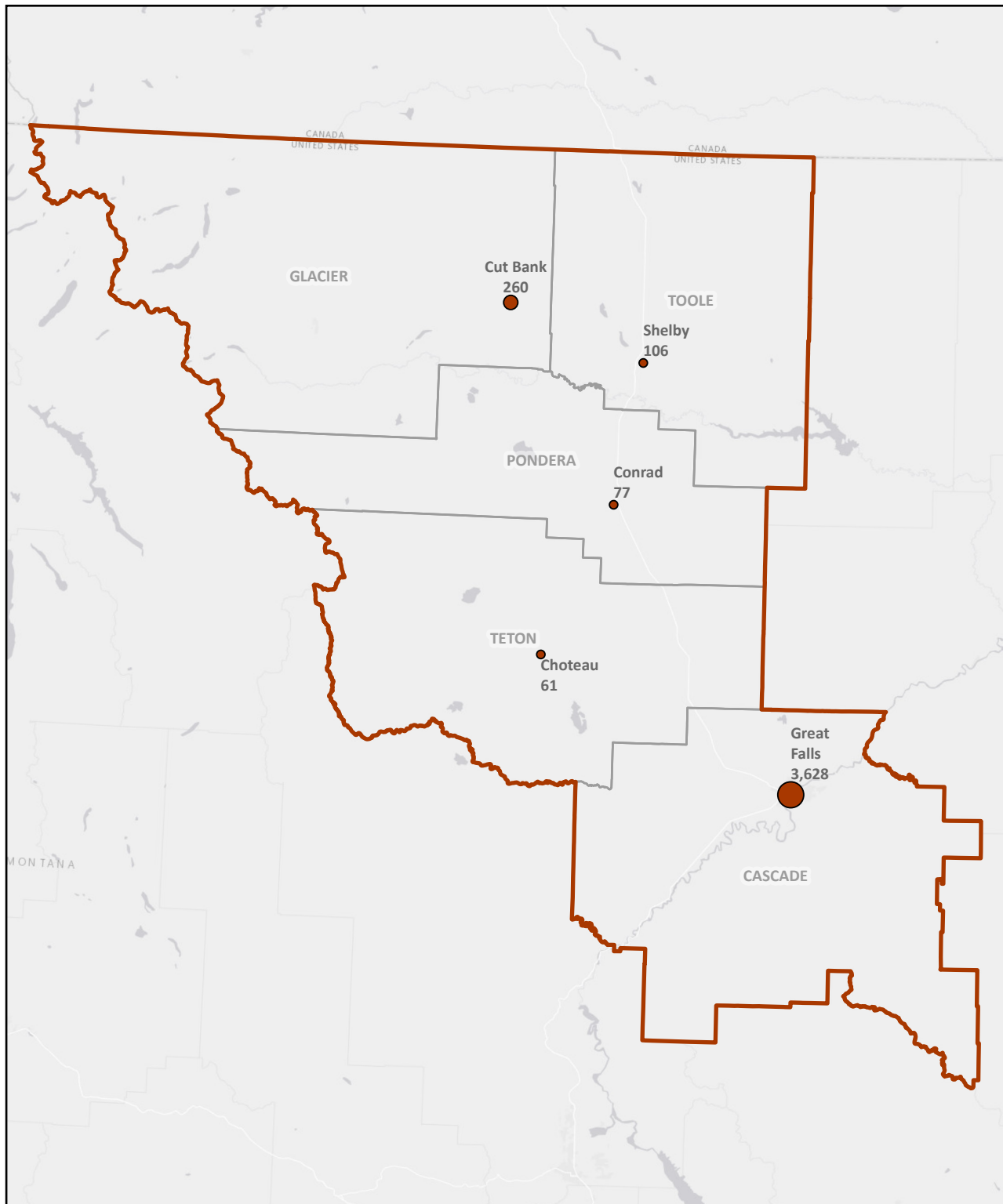
2018 Total Population: 113,919

2018 Poverty Pop.*: 19,459

Area (sq. mi.): 11,627

Population Density per sq. mi.: 9.80

**Source for Poverty: American Community Survey (ACS)
Total poverty (including < 18 yrs. of age)
Current release Oct. 2018*



Region 4 - Helena

2018 Opened Cases

Total Cases

● Less than 186

● 2,051 - 4,500

Division 1

Attorneys: 13.5

Support Staff: 5.0

Investigators: 2.0

Social Workers: 1.0

Contract Attorneys: 44.0

Division 3

Attorneys: 1.0

Support Staff: 1.0

Investigators: 0.0

Total Cases Opened FY18: 2,780

· District Cases Opened: 1,261

· Cases Opened Courts of Limited Jurisdiction: 1,519

Number of District Courts: 3

Number of Courts of Limited Jurisdiction: 8

Number of Treatment Courts: 2

Regional Demographics

2018 Total Population: 86,582

2018 Poverty Pop.*: 9,829

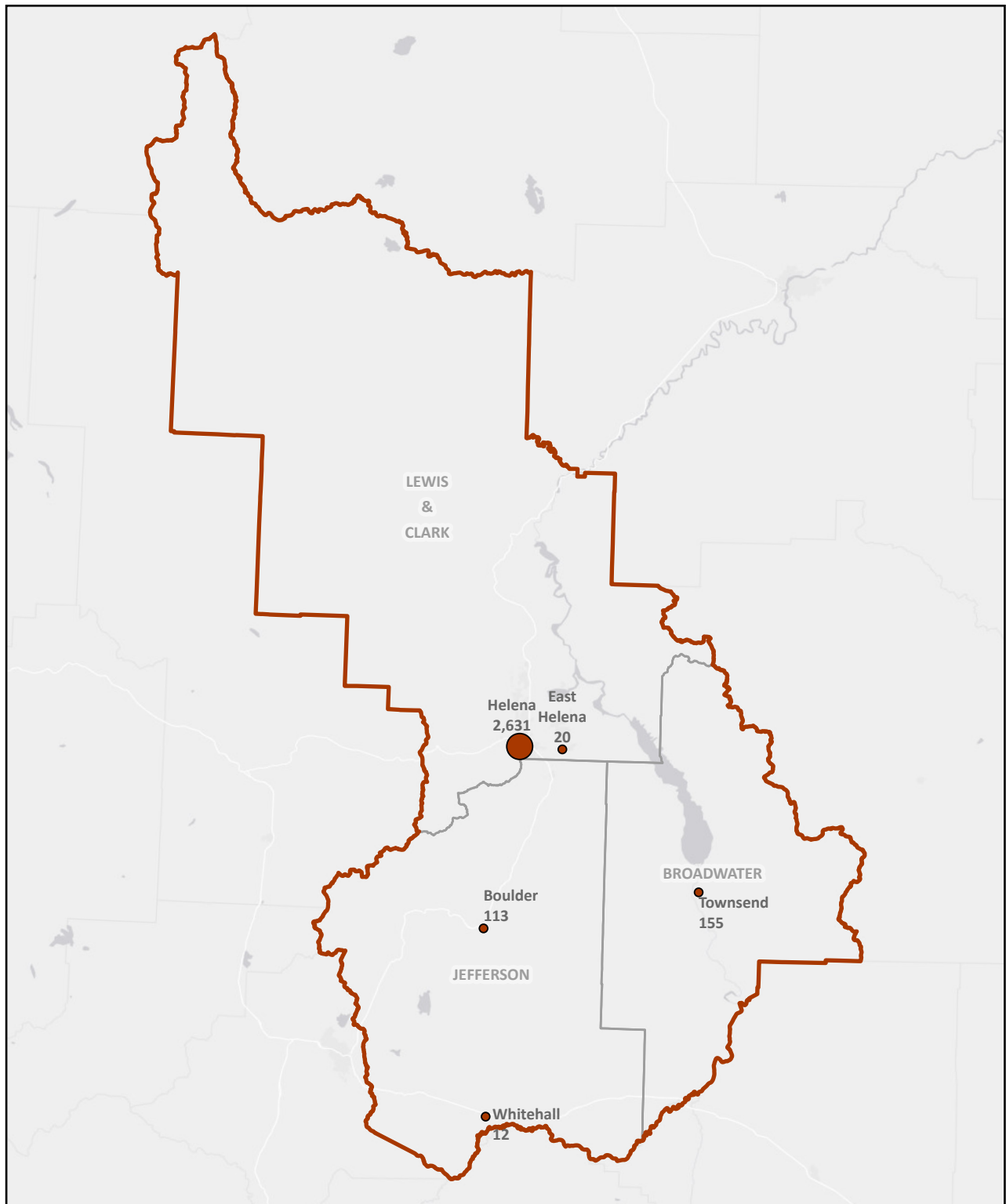
Area (sq. mi.): 6,396

Population Density per sq. mi.: 13.54

**Source for Poverty: American Community Survey (ACS)*

Total poverty (including < 18 yrs. of age)

Current release Oct. 2018



Region 5 - Butte

2018 Opened Cases

Total Cases

- 186 - 450
- 450 - 2,050
- Less than 186

Division 1

Attorneys: 10.0
Support Staff: 4.0
Investigators: 1.0
Social Workers: 0.0
Contract Attorneys: 66.0

Division 3

Attorneys: 1.0
Support Staff: 0.0
Investigators: 0.0

Total Cases Opened FY18: 2,465

- District Cases Opened: 1,183
- Cases Opened Courts of Limited Jurisdiction: 1,282

Number of District Courts: 6

Number of Courts of Limited Jurisdiction: 14

Number of Treatment Courts: 3

Regional Demographics

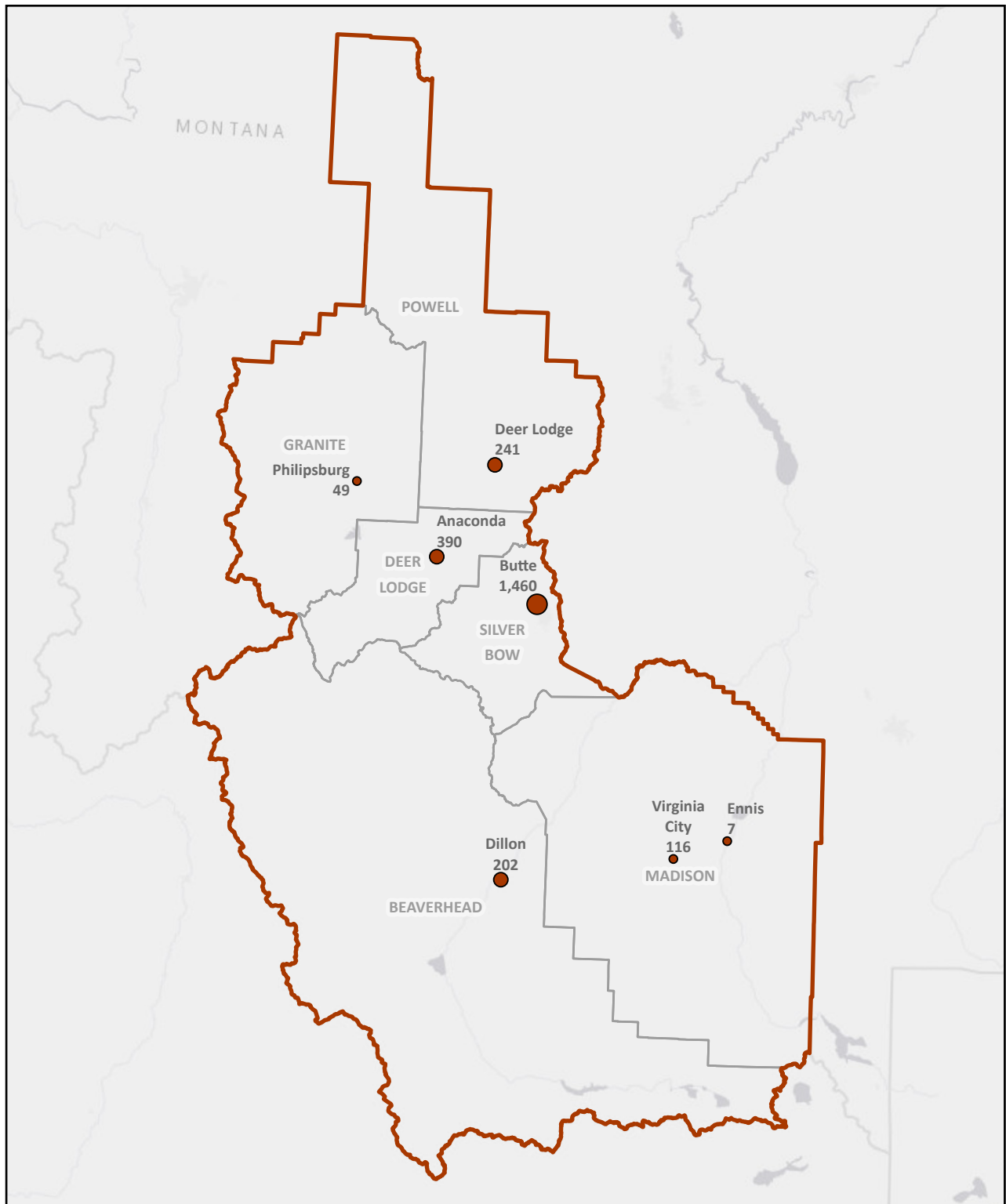
2018 Total Population: 72,136

2018 Poverty Pop.*: 12,476

Area (sq. mi.): 14,701

Population Density per sq. mi.: 4.91

**Source for Poverty: American Community Survey (ACS)
Total poverty (including < 18 yrs. of age)
Current release Oct. 2018*



Region 6 - Havre

2018 Opened Cases

Total Cases

- 450 - 2,050
- Less than 186

Division 1

Attorneys: 5.0
Support Staff: 3.0
Investigators: 1.0
Social Workers: 0.0
Contract Attorneys: 41.0

Division 3

Attorneys: 0.0
Support Staff: 0.0
Investigators: 0.0

Total Cases Opened FY18: 1,295

- District Cases Opened: 616
- Cases Opened Courts of Limited Jurisdiction: 679

Number of District Courts: 6

Number of Courts of Limited Jurisdiction: 16

Number of Treatment Courts: 2

Regional Demographics

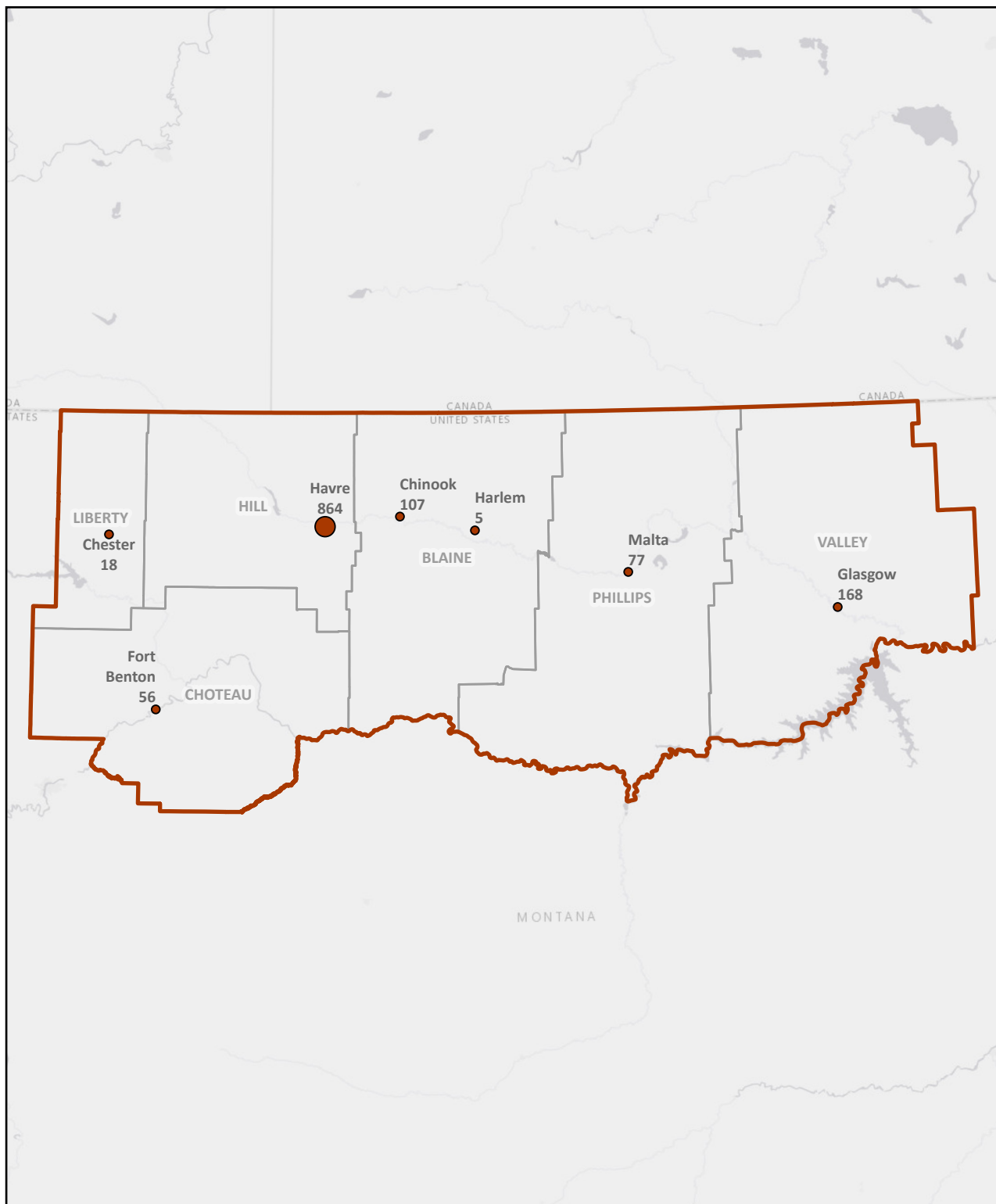
2018 Total Population: 42,678

2018 Poverty Pop.*: 8,490

Area (sq. mi.): 22,873

Population Density per sq. mi.: 1.87

**Source for Poverty: American Community Survey (ACS)
Total poverty (including < 18 yrs. of age)
Current release Oct. 2018*



Region 7 - Lewistown

2018 Opened Cases

- Total Cases 186 - 450
- Less than 186

Division 1

Attorneys: 2.0
Support Staff: 2.0
Investigators: 0.0
Social Workers: 0.0
Contract Attorneys: 41.0

Division 3

Attorneys: 0.0
Support Staff: 0.0
Investigators: 0.0

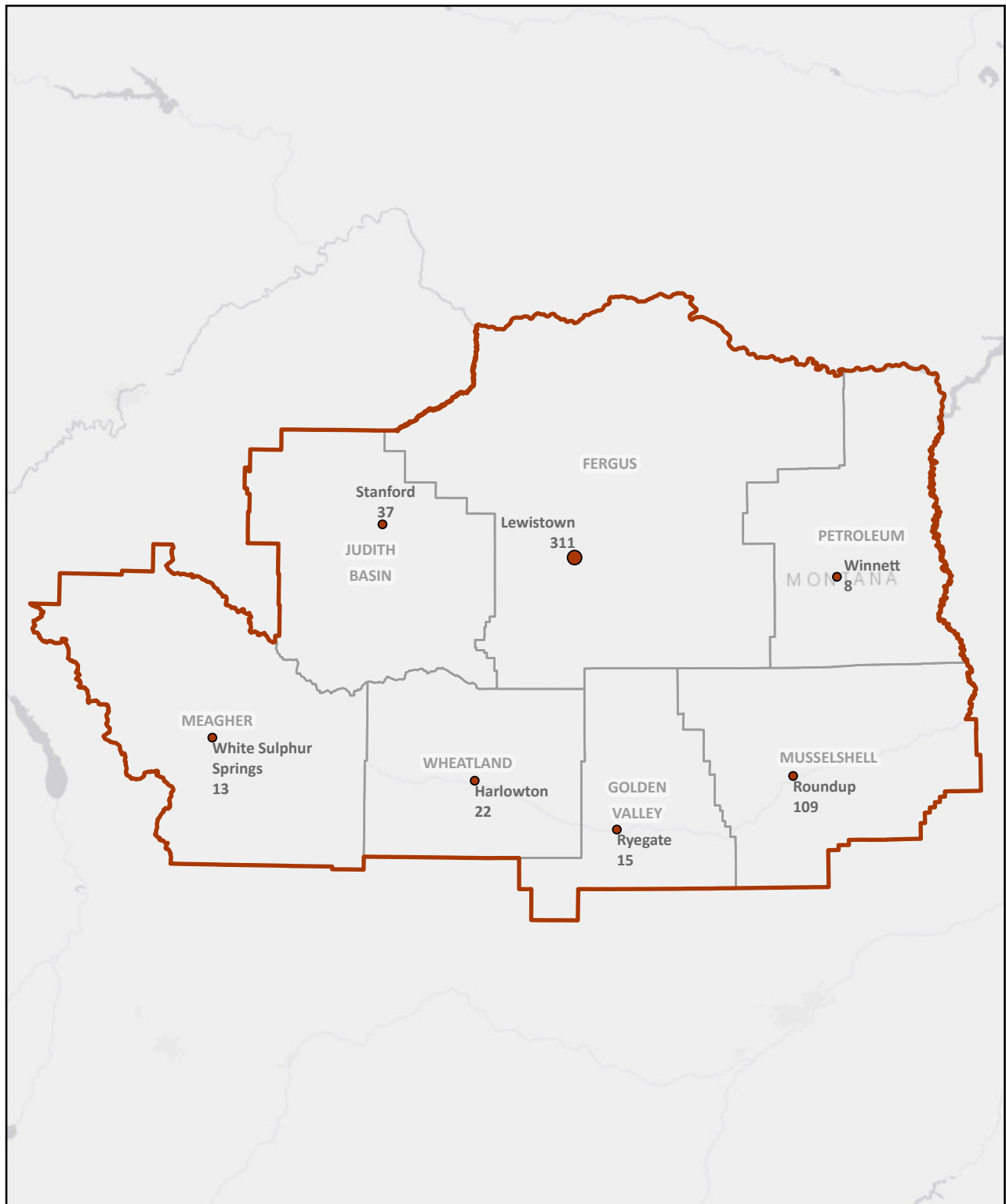
Total Cases Opened FY18: 514

- District Cases Opened: 323
 - Cases Opened Courts of Limited Jurisdiction: 191
- Number of District Courts: 7
Number of Courts of Limited Jurisdiction: 17
Number of Treatment Courts: 0

Regional Demographics

2018 Total Population: 23,568
2018 Poverty Pop.*: 3,534
Area (sq. mi.): 14,765
Population Density per sq. mi.: 1.60

**Source for Poverty: American Community Survey (ACS)
Total poverty (including < 18 yrs. of age)
Current release Oct. 2018*



Region 8 - Bozeman

2018 Opened Cases

Total Cases

● Less than 186

● 186 - 450

● 2,051 - 4,500

Division 1

Attorneys: 12.0
 Support Staff: 6.0
 Investigators: 2.0
 Social Workers: 1.0
 Contract Attorneys: 33.0

Division 3

Attorneys: 1.0
 Support Staff: 0.0
 Investigators: 0.0

Total Cases Opened FY18: 2,762

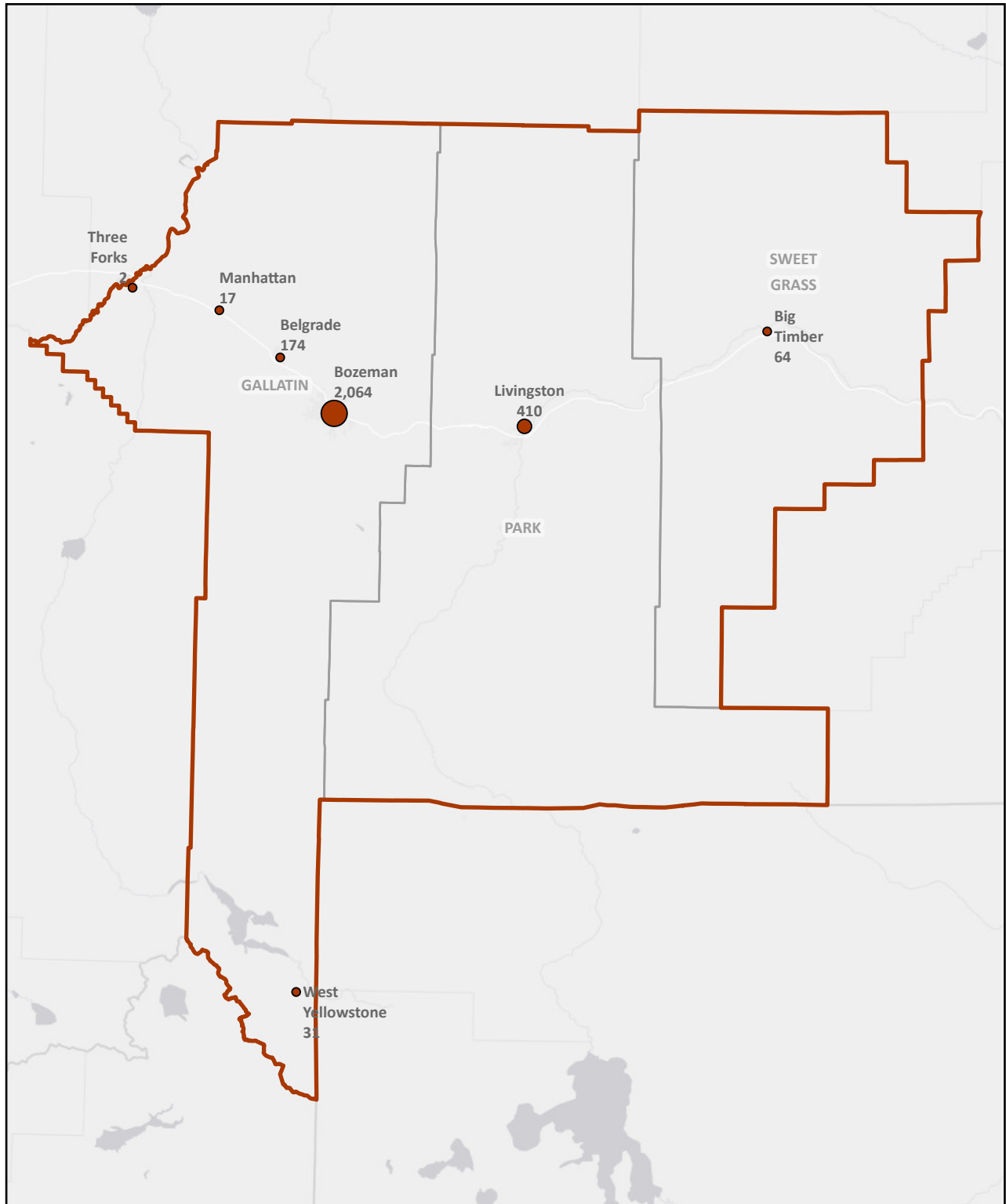
- District Cases Opened: 919
- Cases Opened Courts of Limited Jurisdiction: 1,843

Number of District Courts: 3
 Number of Courts of Limited Jurisdiction: 10
 Number of Treatment Courts: 2

Regional Demographics

2018 Total Population: 129,867
 2018 Poverty Pop.*: 17,237
 Area (sq. mi.): 7,307
 Population Density per sq. mi.: 17.77

**Source for Poverty: American Community Survey (ACS)
 Total poverty (including < 18 yrs. of age)
 Current release Oct. 2018*



Region 9 - Billings

2018 Opened Cases

Total Cases



Division 1

Attorneys: 28.5
Support Staff: 11.5
Investigators: 3.0
Social Workers: 2.0
Contract Attorneys: 51.0

Division 3

Attorneys: 5.5
Support Staff: 1.0
Investigators: 1.0

Total Cases Opened FY18: 7,987

- District Cases Opened: 3,557
- Cases Opened Courts of Limited Jurisdiction: 4,430

Number of District Courts: 4

Number of Courts of Limited Jurisdiction: 13

Number of Treatment Courts: 6

Regional Demographics

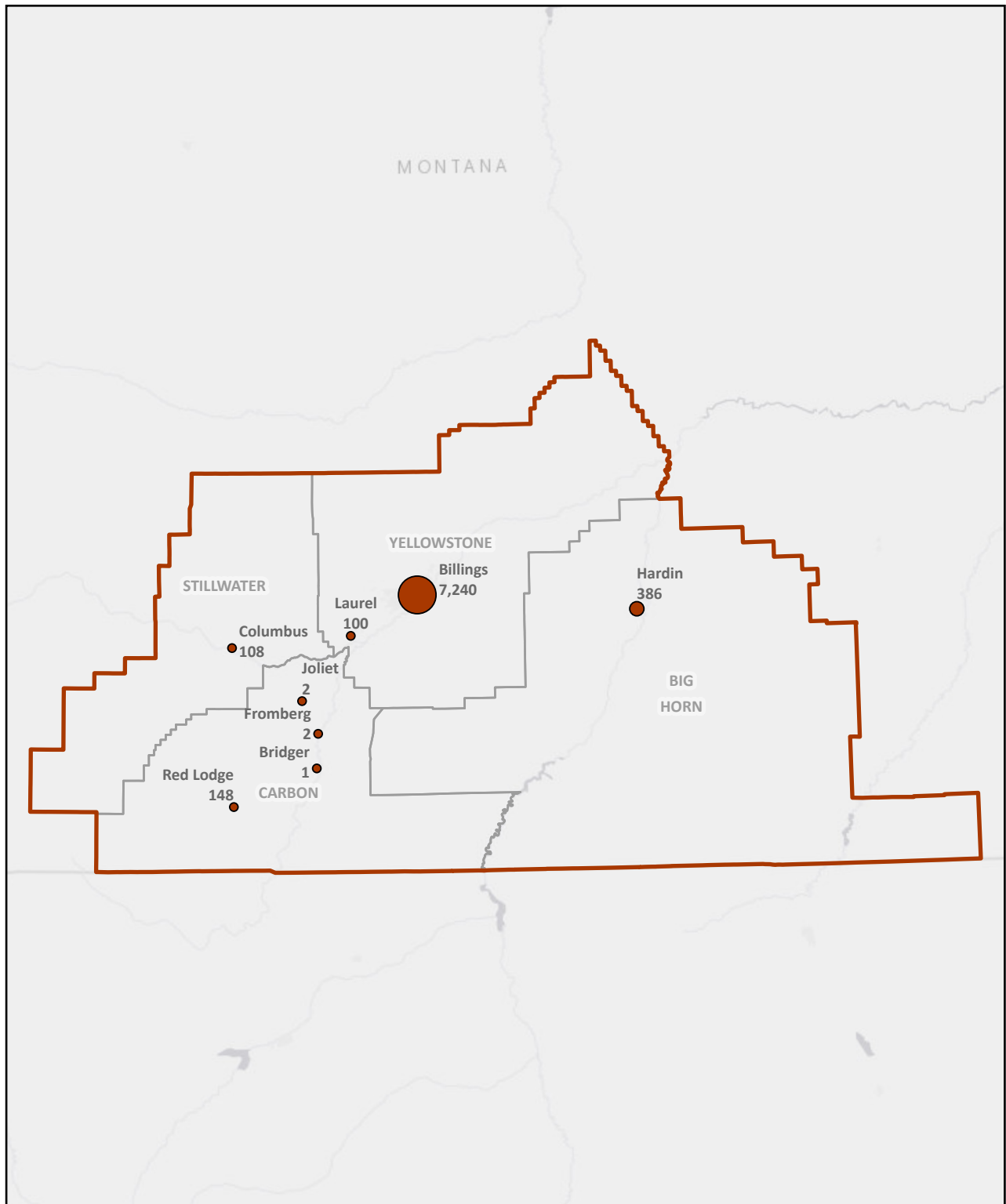
2018 Total Population: 198,872

2018 Poverty Pop.*: 22,738

Area (sq. mi.): 11,530

Population Density per sq. mi.: 17.25

**Source for Poverty: American Community Survey (ACS)
Total poverty (including < 18 yrs. of age)
Current release Oct. 2018*



Region 10 - Glendive

2018 Opened Cases

Total Cases

● 186 - 450

● Less than 186

Division 1

Attorneys: 3.0
 Support Staff: 1.5
 Investigators: 1.0
 Social Workers: 0.0
 Contract Attorneys: 32.0

Division 3

Attorneys: 0.0
 Support Staff: 0.0
 Investigators: 0.0

Total Cases Opened FY18: 803

- District Cases Opened: 496
- Cases Opened Courts of Limited Jurisdiction: 307

Number of District Courts: 8

Number of Courts of Limited Jurisdiction: 19

Number of Treatment Courts: 1

Regional Demographics

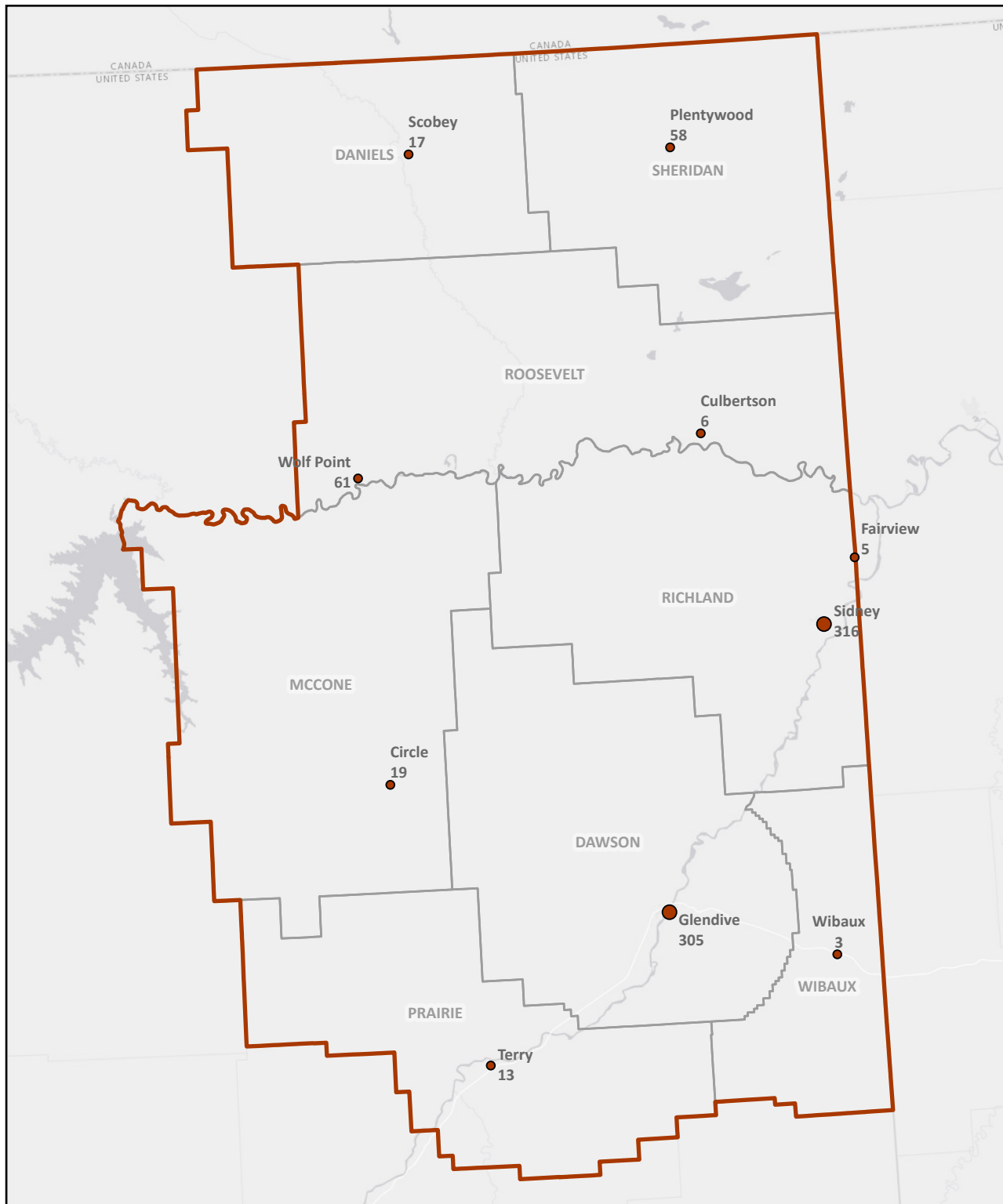
2018 Total Population: 40,919

2018 Poverty Pop.*: 6,363

Area (sq. mi.): 15,304

Population Density per sq. mi.: 2.67

**Source for Poverty: American Community Survey (ACS)
 Total poverty (including < 18 yrs. of age)
 Current release Oct. 2018*



Region 11 - Miles City

2018 Opened Cases

Total Cases

- 186 - 450
- Less than 186

Division 1

Attorneys: 3.0
Support Staff: 1.0
Investigators: 1.0
Social Workers: 0.0
Contract Attorneys: 32.0

Division 3

Attorneys: 0.0
Support Staff: 0.0
Investigators: 0.0

Total Cases Opened FY18: 687

- District Cases Opened: 428
- Cases Opened Courts of Limited Jurisdiction: 259

Number of District Courts: 7

Number of Courts of Limited Jurisdiction: 16

Number of Treatment Courts: 1

Regional Demographics

2018 Total Population: 29,403

2018 Poverty Pop.*: 2,267

Area (sq. mi.): 22,920

Population Density per sq. mi.: 1.28

**Source for Poverty: American Community Survey (ACS)
Total poverty (including < 18 yrs. of age)
Current release Oct. 2018*

